

Activity ID	Activity Name	Remaining Duration	Start	Finish	Total Float	2015															
						April				May				June				July			
						05	12	19	26	03	10	17	24	31	07	14	21	28	05	12	19
3MRP - April 2015 to July 2015																					
02 - PRE-CONSTRUCTION WORKS																					
02.3 - Method Statement / Shop Drawings																					
0230-1380	MS Landscape Deck Structure - Submission	28	20-Apr-15	17-May-15	815																
0230-1390	MS Landscape Deck Structure - ER Review & Comment	28	18-May-15	14-Jun-15	815																
0230-1400	MS Landscape Deck Structure - Resubmission	28	15-Jun-15	12-Jul-15	815																
0230-1611	MS Noise Semi Enclosure - Submission	60	20-Apr-15	18-Jun-15	221																
0230-1612	MS Noise Semi Enclosure - ER Review / Comment	28	19-Jun-15	16-Jul-15	221																
0230-1690	MS Approach Ramp - ER Approval	14	01-Feb-15 A	03-May-15	248																
A10110	MS for Partition Walls and outstanding columns at APS Basement - ER No Adverse Comment	9	01-Feb-15 A	28-Apr-15	28																
A10500	MS EVB Basement & Mezzanine Construction - ER Review / Comment	1	16-Jan-15 A	20-Apr-15	0																
A10510	MS EVB Basement & Mezzanine Construction - Resubmission	14	21-Apr-15	04-May-15	0																
A10520	MS EVB Basement & Mezzanine Construction - No Adverse Comment	14	05-May-15	18-May-15	0																
A10640	MS for Demolition of existing Westbound Bridge - Submission	0	20-Feb-15 A	28-Feb-15 A																	
A10650	MS Demolition of existing Westbound Bridge - ER Review / Comment	0	01-Mar-15 A	15-Mar-15 A																	
A10660	MS Demolition of existing Westbound Bridge - Resubmission	0	16-Mar-15 A	20-Apr-15 A																	
A10670	MS Demolition of existing Westbound Bridge - No Adverse Comment	14	20-Apr-15	03-May-15	6																
A10680	MS for Connection of EVB and EVA - Submission	10	10-Mar-15 A	29-Apr-15	0																
A10690	MS for Connection of EVB and EVA - ER Review & Comment	12	30-Apr-15	11-May-15	0																
A10700	MS for Connection of EVB and EVA - Resubmission	6	12-May-15	17-May-15	0																
A10710	MS for Connection of EVB and EVA - ER No Adverse Comment	10	18-May-15	27-May-15*	0																
A5940	MS for Temporary Steel Tower under existing W/B Bridge - ER No Adverse Comment	2	15-Feb-15 A	21-Apr-15	41																
A7580	MS Temporary Bridge TA2 - Resubmission	3	16-Mar-15 A	22-Apr-15	3																
A7590	MS Temporary Bridge TA2 - ER No Adverse Comment	6	23-Apr-15	28-Apr-15	3																
A8931	MS for installation of Temporary JTI sign gantry- Submission	0	10-Mar-15 A	15-Mar-15 A																	
A8941	MS for installation of Temporary JTI sign gantry - ER Review & Comment	0	16-Mar-15 A	19-Mar-15 A																	
A8951	MS for installation of Temporary JTI sign gantry - Resubmission	0	20-Mar-15 A	31-Mar-15 A																	
A8961	MS for installation of Temporary JTI sign gantry - ER No Adverse Comment	0	01-Apr-15 A	18-Apr-15 A																	
02.4 - Contractor's Design and Build Items																					
0240-1113	Noise Enclosure Structural - Shop Drawings	0	02-Jan-14 A	20-Apr-15	136																
0240-1180	HGHK Permanent Carpark Design - ER/HGHK Review and Comment	80	20-Apr-15	08-Jul-15	1																
0240-1270	Landscaping Design - Submission	90	20-Apr-15*	18-Jul-15	661																
A5890	Temp Bridge "TA2" Design (Foundation & Structure) - ER No Adverse Comment	2	01-Dec-14 A	22-Apr-15	4																
A5900	Temp Bridge "TA2" - Fabrication	2	01-Dec-14 A	22-Apr-15	4																
A8991	Design for Trial Panels > Green Roof & Wall- ER No Adverse Comment	21	20-Apr-15	10-May-15	748																
A9001	Design for Trial Panels > Green Roof & Wall - Fabrication	48	11-May-15	27-Jun-15	748																
02.5 - Bridge Segment/Beam Off-site Precasting																					
0250-1720.19	Precast Beam Bridge C1 2021-C	4	26-Jan-15 A	23-Apr-15	256																
0250-1720.20	Precast Beam Bridge C1 2122-A	18	11-Feb-15 A	07-May-15	242																
0250-1720.21	Precast Beam Bridge C1 2122-B	18	12-Feb-15 A	07-May-15	242																
0250-1720.22	Precast Beam Bridge C1 2122-C	18	12-Feb-15 A	07-May-15	206																
0250-1720.23	Precast Beam Bridge C1 2122-D	18	08-May-15	25-May-15	206																
0250-1720.25	Precast Beam Bridge C1 2122-E	18	26-May-15	12-Jun-15	206																
0250-1720.26	Precast Beam Bridge C1 2122-F	18	13-Jun-15	30-Jun-15	206																
0250-1720.27	Precast Beam Bridge E E3E2-A	18	08-May-15	25-May-15	58																
0250-1720.28	Precast Beam Bridge E E3E2-B	18	26-May-15	12-Jun-15	58																
0250-1720.29	Precast Beam Bridge E E3E2-C	18	13-Apr-15 A	07-May-15	58																
0250-1720.30	Precast Beam Bridge E E4E3-A	18	13-Jun-15	30-Jun-15	58																

- Remaining Level of Effort
- Actual Level of Effort
- Actual Work
- Remaining Work
- Critical Remaining Work

Contract HY/2009/19

Three Months Rolling Programme (20 April to 19 July 2015)

Activity ID	Activity Name	Remaining Duration	Start	Finish	Total Float	2015															
						April				May				June				July			
						05	12	19	26	03	10	17	24	31	07	14	21	28	05	12	19
A8060.1	Complete Demolition of Median Barrier at Existing W/B bridge > (Pier 15-21 & 44-49)	0	30-Mar-15 A	15-Apr-15 A		Complete Demolition of Median Barrier at Existing W/B bridge > (Pier 15-21 & 44-49)															
A8061	Opening of Median Barrier > (Pier 15-21 & 44-49) - Paving + Rd. marking	0	11-Apr-15 A	18-Apr-15 A		Opening of Median Barrier > (Pier 15-21 & 44-49) - Paving + Rd. marking															
A8061.1	Install Precast Barrier > (Pier 15-21 & 44-49)	0	13-Apr-15 A	18-Apr-15 A		Install Precast Barrier > (Pier 15-21 & 44-49)															
A8061.2	Saw - Cutting of Slab at W/B Bridge (Pier 26-44) - Along Meddian Beams - Part 1	0	15-Nov-14 A	13-Apr-15 A		Saw - Cutting of Slab at W/B Bridge (Pier 26-44) - Along Meddian Beams - Part 1															
A8530	Saw - Cutting of Slab at W/B Bridge (Pier 26-44) - Remaining Area - Part 2	16	20-Apr-15	05-May-15	43	Saw - Cutting of Slab at W/B Bridge (Pier 26-44) - Remaining Area - Part 2															
A8540	Saw - Cutting of Slab at W/B Bridge (Pier 17-26)	12	04-May-15	15-May-15	77	Saw - Cutting of Slab at W/B Bridge (Pier 17-26)															
10.3 - Middle Bridge (Bridge F)																					
10.3.1 - Pier Construction																					
Abutment D12																					
1031-1058	Abut D12 (Approach Ramp Area) - Reb Fix + Concrete Pour 3	7	27-Dec-14 A	27-Apr-15	144	Abut D12 (Approach Ramp Area) - Reb Fix + Concrete Pour 3															
A10720	Construct Abutment D12 Existing W/B & E/B Bridge - Excav. Bored Pile (4 nos)	0	13-Mar-15 A	16-Mar-15 A		Construct Abutment D12 Existing W/B & E/B Bridge - Excav. Bored Pile (4 nos)															
A10730	Construct Abutment D12 W/B Bridge - Prepare CJ	0	17-Mar-15 A	07-Apr-15 A		Construct Abutment D12 W/B Bridge - Prepare CJ															
A10740	Construct Abutment D12 - Construct Abut D12 Pile Cap + Backfill	10	08-Apr-15 A	30-Apr-15	134	Construct Abutment D12 - Construct Abut D12 Pile Cap + Backfill															
10.4 - Bridge Deck Demolition																					
10.4.1 - Existing W/B Bridge (Part 1)																					
A11840	Demolish W/B Bridge Deck Pier 28-29 (7 beams) > by Crane	7	05-May-15	12-May-15	24	Demolish W/B Bridge Deck Pier 28-29 (7 beams) > by Crane															
A11850	Demolish W/B Bridge Deck Pier 29-30 (7 beams) > by Crane	6	13-May-15	19-May-15	24	Demolish W/B Bridge Deck Pier 29-30 (7 beams) > by Crane															
A11860	Demolish W/B Bridge Pier 29	6	20-May-15	26-May-15	24	Demolish W/B Bridge Pier 29															
A11870	Demolish W/B Bridge Deck Pier 30-31 (7 beams) > by Crane	6	27-May-15	02-Jun-15	24	Demolish W/B Bridge Deck Pier 30-31 (7 beams) > by Crane															
A11880	Demolish W/B Bridge Deck Pier 31-32 (7 beams) > by Crane	6	03-Jun-15	09-Jun-15	24	Demolish W/B Bridge Deck Pier 31-32 (7 beams) > by Crane															
A11890	Demolish W/B Bridge Pier 30	6	10-Jun-15	16-Jun-15	24	Demolish W/B Bridge Pier 30															
A11900	Demolish W/B Bridge Pier 31	6	17-Jun-15	24-Jun-15	25	Demolish W/B Bridge Pier 31															
A11910	Demolish W/B Bridge Deck Pier 32-33 (7 beams) > by Crane	6	25-Jun-15	02-Jul-15	33	Demolish W/B Bridge Deck Pier 32-33 (7 beams) > by Crane															
A11920	Demolish W/B Bridge Deck Pier 33-34 (7 beams) > by Crane	6	03-Jul-15	09-Jul-15	33	Demolish W/B Bridge Deck Pier 33-34 (7 beams) > by Crane															
A11930	Demolish W/B Bridge Pier 32	6	10-Jul-15	16-Jul-15	33	Demolish W/B Bridge Pier 32															
A11940	Demolish W/B Bridge Pier 33	6	17-Jul-15	23-Jul-15	33	Demolish W/B Bridge Pier 33															
A11950	Demolish W/B Bridge Pier 29 > Pile Cap	14	27-May-15	11-Jun-15	35	Demolish W/B Bridge Pier 29 > Pile Cap															
A11960	Construct W/B Bridge Pier 29 > Pile Cap	14	12-Jun-15	29-Jun-15	35	Construct W/B Bridge Pier 29 > Pile Cap															
A11970	Construct W/B Bridge Pier 29 > Column	14	30-Jun-15	16-Jul-15	35	Construct W/B Bridge Pier 29 > Column															
A11980	Construct W/B Bridge Pier 29 > Rebar Fixing - Crosshead	14	17-Jul-15	01-Aug-15	35	Construct W/B Bridge Pier 29 > Rebar Fixing - Crosshead															
A12000	Demolish W/B Bridge Pier 30 > Pile Cap	14	17-Jun-15	04-Jul-15	24	Demolish W/B Bridge Pier 30 > Pile Cap															
A12010	Construct W/B Bridge Pier 30 > Pile Cap	14	06-Jul-15	21-Jul-15	24	Construct W/B Bridge Pier 30 > Pile Cap															
A12070	Demolish W/B Bridge Pier 31 > Pile Cap	14	25-Jun-15	11-Jul-15	25	Demolish W/B Bridge Pier 31 > Pile Cap															
A12080	Construct W/B Bridge Pier 31 > Pile Cap	14	13-Jul-15	28-Jul-15	25	Construct W/B Bridge Pier 31 > Pile Cap															
A12130	Demolish W/B Bridge Pier 32 > Pile Cap	14	17-Jul-15	01-Aug-15	36	Demolish W/B Bridge Pier 32 > Pile Cap															
A12250	Saw Cutting W/B Bridge Deck Pier 27-28	5	09-May-15	15-May-15	64	Saw Cutting W/B Bridge Deck Pier 27-28															
A12260	Demolish W/B Bridge Deck Pier 27-28 (7 beams) > by Crane A	7	15-May-15	23-May-15	64	Demolish W/B Bridge Deck Pier 27-28 (7 beams) > by Crane A															
A12270	Demolish W/B Bridge Pier 28 > Column > by Crane B	6	23-May-15	30-May-15	160	Demolish W/B Bridge Pier 28 > Column > by Crane B															
A12280	Saw Cutting W/B Bridge Deck Pier 26-27	5	23-May-15	29-May-15	64	Saw Cutting W/B Bridge Deck Pier 26-27															
A12290	Demolish W/B Bridge Deck Pier 26-27 (7 beams) > by Crane A	6	29-May-15	05-Jun-15	64	Demolish W/B Bridge Deck Pier 26-27 (7 beams) > by Crane A															
A12300	Demolish W/B Bridge Pier 27 > Column > by Crane B	6	05-Jun-15	12-Jun-15	110	Demolish W/B Bridge Pier 27 > Column > by Crane B															
A12310	Saw Cutting W/B Bridge Deck Pier 25-26	5	05-Jun-15	11-Jun-15	64	Saw Cutting W/B Bridge Deck Pier 25-26															
A12320	Demolish W/B Bridge Deck Pier 25-26 (7 beams) > by Crane A	6	11-Jun-15	18-Jun-15	64	Demolish W/B Bridge Deck Pier 25-26 (7 beams) > by Crane A															
A12330	Demolish W/B Bridge Pier 26 > Column > by Crane B	6	18-Jun-15	26-Jun-15	101	Demolish W/B Bridge Pier 26 > Column > by Crane B															
A12340	Saw Cutting W/B Bridge Deck Pier 24-25	5	18-Jun-15	25-Jun-15	64	Saw Cutting W/B Bridge Deck Pier 24-25															
A12350	Demolish W/B Bridge Deck Pier 24-25 (7 beams) > by Crane A	6	25-Jun-15	03-Jul-15	64	Demolish W/B Bridge Deck Pier 24-25 (7 beams) > by Crane A															
A12360	Demolish W/B Bridge Pier 25 > Column > by Crane B	6	03-Jul-15	10-Jul-15	133	Demolish W/B Bridge Pier 25 > Column > by Crane B															
A12370	Saw Cutting W/B Bridge Deck Pier 23-24	5	03-Jul-15	09-Jul-15	64	Saw Cutting W/B Bridge Deck Pier 23-24															
A12380	Demolish W/B Bridge Deck Pier 23-24 (7 beams) > by Crane A	6	09-Jul-15	16-Jul-15	64	Demolish W/B Bridge Deck Pier 23-24 (7 beams) > by Crane A															

- Remaining Level of Effort
- Actual Level of Effort
- Actual Work
- Remaining Work
- Critical Remaining Work

Contract HY/2009/19

Three Months Rolling Programme (20 April to 19 July 2015)

Activity ID	Activity Name	Remaining Duration	Start	Finish	Total Float	2015															
						April				May				June				July			
						05	12	19	26	03	10	17	24	31	07	14	21	28	05	12	19
1071-1047	TTM Stage 4 - Hing Fat Slip Road Divert 1 Lane to New E/B Bridge through 'TA2' to Release TA1	0		22-Jun-15	0	◆ TTM Stage 4 - Hing Fat Slip Road Div															
10.7.2 - Oil Street/Watson Road (Portion III)																					
A12510	Box Culvert Demolition > Portion VIIB > Watson Road	0	01-Apr-15 A	07-Apr-15 A		Box Culvert Demolition > Portion VIIB > Watson Road															
A12520	Box Culvert Demolition - Concrete Pavement Removal > Portion VIIB > Watson Road	0	08-Apr-15 A	14-Apr-15 A		Box Culvert Demolition - Concrete Pavement Removal > Portion VIIB > Watson Road															
A12530	Box Culvert Demolition - Trial Trench to Expose Grd. Utilities > Portion VIIB > Watson Road	0	15-Apr-15 A	19-Apr-15 A		Box Culvert Demolition - Trial Trench to Expose Grd. Utilities > Portion VIIB > Watson Road															
A12540	Box Culvert Demolition - Dem. Upper portion of Culvert (2M From R.L.) > Portion VIIB > Watson Road	4	21-Apr-15	25-Apr-15	501	Box Culvert Demolition - Dem. Upper portion of Culvert (2M From R.L.) > Portion VIIB > Watson Road															
A12550	Box Culvert Demolition - Remove Mud Deposit from Culvert > Portion VIIB > Watson Road	4	25-Apr-15	30-Apr-15	501	Box Culvert Demolition - Remove Mud Deposit from Culvert > Portion VIIB > Watson Road															
A12560	Box Culvert Demolition - Backfilling > Portion VIIB > Watson Road	5	30-Apr-15	07-May-15	501	Box Culvert Demolition - Backfilling > Portion VIIB > Watson Road															
A12570	Drainage works - Manhole 1-49B, DN450 & Associate Gully Pipes > Portion VIIB > Watson Road	10	07-May-15	19-May-15	501	Drainage works - Manhole 1-49B, DN450 & Associate Gully Pipes > Portion VIIB > Watson Road															
A12590	Drainage works - Manhole 1-49, DN300 & Associate Gully Pipes > Portion VIIB > Watson Road	10	19-May-15	30-May-15	501	Drainage works - Manhole 1-49, DN300 & Associate Gully Pipes > Portion VIIB > Watson Road															
A12600	Drainage works - Manhole 1-49C, DN225 & Associate Gully Pipes > Portion VIIB > Watson Road	10	30-May-15	11-Jun-15	501	Drainage works - Manhole 1-49C, DN225 & Associate Gully Pipes > Portion VIIB > Watson Road															
A12610	Drainage works - Road Reinstatement > Portion VIIB > Watson Road	5	11-Jun-15	17-Jun-15	501	Drainage works - Road Reinstatement > Portion VIIB > Watson Road															

- Remaining Level of Effort ◆ ◆ Milestone
- Actual Level of Effort
- Actual Work
- Remaining Work
- Critical Remaining Work

Contract HY/2009/19

Three Months Rolling Programme (20 April to 19 July 2015)

Activity ID	Activity Name	Calendar	Original Duration	Start	Finish	Total Float	2015				2016		
							Q4	Q1	Q2	Q3	Q4	Q1	Q2
HY/2009/15 - Works Programme Rev. M (DD:20-Sep-12)													
Works in East Ventilation Adit - Based on Alternative Method													
Reinstatement of Breakwater													
S3_54840	Reinstatement works -west side	7d/wk-1	60d	21-Feb-14 08 A	30-Sep-14 18	-85d							
S3_60085	Reinstatement works east side	7d/wk-1	60d	31-May-14 08 A	30-Sep-14 18	-85d							
S3_54845	Completion of Section 3 (KD8) in EVA Area (Alternative Method)	7d/wk-2	0d		30-Sep-14 18	-86d							
Works in TS1/TS2 - OHVD and Cable Trough/Maintenance Walkway													
TS2 - OHVD and Cable Trough/Maintenance Walkway													
OHVD Slab and Cable Trough Construction													
S3_6210	TS2 - OHVD/ Cable trough	7d/wk-1	40d	20-May-14 08 A	30-Sep-14 18	-85d							
S3_6212	Completion of Section 3 - TS1/TS2 Area (below -6mpd) KD8)	7d/wk-2	0d		30-Sep-14 18	-86d							
Works in TS4/ME4 Area (Portion 14A, 14B, 15, 23)													
TS4/ME4 - Removal of Temporary Reclamation													
Remaining Works at TZ6													
Stage 4 - Seawall and Reclamation at TZ6													
A-2010	Installation of seawall blocks (Qty: 245 nos.)	7d/wk-2	6d	15-Sep-14 08 A	26-Sep-14 18	-332d							
A-2020	Soil Backfilling up to -2.45mPD (Qty:3,000 cu.m.)	7d/wk-2	2d	25-Sep-14 08	26-Sep-14 18	-332d							
A-2030	Utilities installation for Mined Tunnel	7d/wk-2	1d	27-Sep-14 08	27-Sep-14 18	-332d							
A-2040	Soil backfilling up to ground level (Qty:2,000 cu.m.)	7d/wk-2	2d	28-Sep-14 08	29-Sep-14 18	-332d							
A-2050	Site clearance	7d/wk-2	1d	30-Sep-14 08	30-Sep-14 18	-305d							
A-2060	Handover to MTR	7d/wk-2	0d		30-Sep-14 18	-305d							
Removal of Temporary Reclamation at TS4/ME4													
Stage 5 (Zones A, D & F - TS4-D33 to D-26, SCL2 & ME4-D19 to D13)													
A-3000	D-Wall horizontal cutting (Qty: 62 pcs.)	7d/wk-2	21d	29-Aug-14 08 A	23-Sep-14 18	-340d							
Stage 6 (Zone C - P4, ME4-D12 to ME4-D16 & P3)													
A-3011	Marine removal of temporary reclamation and seawall blocks (Zones C)	7d/wk-2	21d	31-Aug-14 08 A	02-Oct-14 18	-353d							
A-3030	D-Wall vertical cutting (Qty: 15 pcs.)	7d/wk-2	4d	03-Oct-14 08	06-Oct-14 18	-353d							
A-3040	D-Wall horizontal cutting (Qty: 20 pcs.)	7d/wk-2	5d	06-Oct-14 08	10-Oct-14 18	-352d							

- Summary Bar
- Actual Level of Effort
- Actual Work
- Remaining Work
- Critical Remaining Work
- Milestone

1 of 18

China State Construction Engineering (Hong Kong) Ltd

Contract No. HY/2009/15 - Central Wan Chai By Pass - Tunnel (Causeway Bay Typhoon Shelter Section)

WORKS PROGRAMME REV. M

Prepared by William Caluza

Date	Revision	Checked	Approved
26-Sep...	1st submission		



中國建築工程(香港)有限公司
CHINA STATE CONSTRUCTION ENGINEERING (HONG KONG) LTD.

Activity ID	Activity Name	Calendar	Original Duration	Start	Finish	Total Float	2015					2016				
							Q4	Q1	Q2	Q3	Q4	Q1	Q2	Q3		
Stage 7 (Zones C & E - ME4-D06 to D01, SCL1 & TS4-D25)																
A-4000	Marine removal of temporary reclamation and seawall blocks (Zones C & E)	7d/wk-2	18d	06-Sep-14 08 A	06-Oct-14 18	-353d										
A-3090	Hole coring (Qty: 44 nos)	7d/wk-2	9d	20-Sep-14 08*	28-Sep-14 18	-346d										
A-4010	D-Wall vertical cutting (Qty: 27pcs.)	7d/wk-2	7d	07-Oct-14 08	13-Oct-14 18	-353d										
A-4020	D-Wall horizontal cutting (Qty: 37 pcs.)	7d/wk-2	10d	11-Oct-14 08	20-Oct-14 18	-353d										
Stage 9 (Zone I - TS4-D01 to TS4-D08)																
A-3050	Remaining removal of temporary reclamation (Zone I)	7d/wk-2	28d	29-Aug-14 08 A	01-Oct-14 18	-342d										
A-3060	Hole coring (Qty: 25 nos)	7d/wk-2	5d	02-Oct-14 08	06-Oct-14 18	-342d										
A-3070	D-Wall vertical cutting (Qty: 14 pcs.)	7d/wk-2	3d	07-Oct-14 08	09-Oct-14 18	-342d										
A-3080	D-Wall horizontal cutting (Qty: 24 pcs.)	7d/wk-2	5d	21-Oct-14 08	25-Oct-14 18	-353d										
Stage 8 (Zones G & K - TS4-D24 to TS4-D15)																
A-4040	Relocation of RHKYC floating pontoon	7d/wk-2	5d	22-Sep-14 08*	26-Sep-14 18	-338d										
A-4050	Hole coring (Qty: 27 nos)	7d/wk-2	6d	29-Sep-14 08	04-Oct-14 18	-346d										
A-4060	Marine removal of temporary reclamation and seawall blocks (Zone G & K)	7d/wk-2	14d	11-Oct-14 08	24-Oct-14 18	-352d										
A-4070	D-Wall vertical cutting (Qty: 18pcs.)	7d/wk-2	4d	25-Oct-14 08	28-Oct-14 18	-352d										
A-4080	D-Wall horizontal cutting (Qty: 25 pcs.)	7d/wk-2	7d	26-Oct-14 08	01-Nov-14 18	-352d										
Stage 10 (Zone J - TS4-D09 to TS4-D14)																
A-4090	Land removal of temporary reclamation (Zone J)	7d/wk-2	10d	07-Oct-14 08	16-Oct-14 18	-344d										
A-5000	Hole coring (Qty: 32 nos)	7d/wk-2	7d	17-Oct-14 08	23-Oct-14 18	-340d										
A-5010	Marine removal of temporary reclamation (Zone J)	7d/wk-2	7d	26-Oct-14 08	01-Nov-14 18	-353d										
A-5020	D-Wall vertical cutting (Qty: 20 pcs.)	7d/wk-2	5d	02-Nov-14 08	06-Nov-14 18	-353d										
A-5030	D-Wall horizontal cutting (Qty: 26 pcs.)	7d/wk-2	7d	04-Nov-14 08	10-Nov-14 18*	-353d										
Stage 13 - Phase 3 Mooring																
A-5050	Final trimming of sea bed level	7d/wk-2	4d	02-Nov-14 08	05-Nov-14 18	-347d										
A-5060	Phase 3 Mooring	7d/wk-2	6d	06-Nov-14 08	11-Nov-14 18	-347d										
A-5040	Reinstatement of existing seawall (Zones I & J)	7d/wk-2	7d	11-Nov-14 08	17-Nov-14 18	-353d										
Stage 12 - Re-provisioning of Jetty																
S6_5258	Provision of Mobile Crane (until permanent re-provision of Jetty is completed)	7d/wk-1	160d	20-Feb-14 08 A	30-Dec-14 18	-335d										
A-6010	BA8 submission and consent for commencement of superstructure	7d/wk-2	28d	20-Sep-14 08 A	16-Oct-14 18	-336d										

- Summary Bar
- Actual Level of Effort
- Actual Work
- Remaining Work
- Critical Remaining Work
- Milestone

2 of 18

China State Construction Engineering (Hong Kong) Ltd

Contract No. HY/2009/15 - Central Wan Chai By Pass - Tunnel (Causeway Bay Typhoon Shelter Section)

WORKS PROGRAMME REV. M

Prepared by William Caluza			
Date	Revision	Checked	Approved
26-Sep...	1st submission		



中國建築工程(香港)有限公司
CHINA STATE CONSTRUCTION ENGINEERING (HONG KONG) LTD.

Activity ID	Activity Name	Calendar	Original Duration	Start	Finish	Total Float	2015				2016								
							Q4	Q1	Q2	Q3	Q4	Q1	Q2	Q3					
A-6012	Submission of performance report	7d/wk-2	1d	25-Oct-14 08*	25-Oct-14 18	-286d													
A-6020	Erection of working platform for jetty beams and reinstate the floating portoon	7d/wk-2	10d	02-Nov-14 08	11-Nov-14 18	-352d													
A-6040	BA10 submission for authorized signatory and subcontractor	7d/wk-2	1d	12-Nov-14 08	12-Nov-14 18	-304d													
A-6030	Jetty beams construction	7d/wk-2	14d	12-Nov-14 08	25-Nov-14 18	-352d													
A-6052	Construction of floating pontoon	7d/wk-2	14d	26-Nov-14 08	09-Dec-14 18	-331d													
A-6050	BA13 submission + 14-day cube test results	7d/wk-2	28d	26-Nov-14 08	23-Dec-14 18	-352d													
A-6060	E&M and accessories installation	7d/wk-2	7d	24-Dec-14 08	30-Dec-14 18	-352d													
A-6070	Handover to RHKYC	7d/wk-2	1d	31-Dec-14 08	31-Dec-14 18	-352d													
Stage 11 - Construction of TZ4																			
A-6080	South side - laying rockfill and levelling stone (Qty: 1,550 cu.m)	7d/wk-2	12d	24-Sep-14 08	05-Oct-14 18	-339d													
A-6090	South side - install seawall blocks (Qty: 255 nos.)	7d/wk-2	6d	06-Oct-14 08	11-Oct-14 18	-339d													
A-7000	South side - general fill (Qty: 2,000 cu.m.)	7d/wk-2	2d	12-Oct-14 08	13-Oct-14 18	-339d													
A-7010	North side - laying rockfill and levelling stone (Qty: 1,550 cu.m)	7d/wk-2	12d	21-Oct-14 08	01-Nov-14 18	-346d													
A-7020	North side - install seawall blocks (Qty: 255 nos.)	7d/wk-2	6d	02-Nov-14 08	07-Nov-14 18	-346d													
A-7030	North side - general fill (Qty:2,000 cu.m.)	7d/wk-2	2d	08-Nov-14 08	09-Nov-14 18	-346d													
A-7040	Handover to contract TS3/SR8	7d/wk-2	1d	10-Nov-14 08	10-Nov-14 18*	-346d													
TS4/ME4, Removal of Temporary Reclamation																			
S26875	Completion of Section 2 (With ME4 option) (KD7)	7d/wk-2	0d		17-Nov-14 18	-353d													
S26890	Completion of Section 7B (ME4) (KD13)	7d/wk-2	0d		17-Nov-14 18	-353d													
TS4 - OHVD / Cable Trough																			
S5_6185	TS4 (incl. TS4+) - OHVD Slab - Area C (access through temp. opening at TZ4)	7d/wk-1	36d	02-Jan-15 08*	06-Feb-15 18	195d													
S5_6190	TS4 (incl. TS4+) - Cable Trough (access through temp. opening at TZ4)	7d/wk-1	60d	07-Feb-15 08*	14-Apr-15 18	195d													
S5_59850	Completion of Section 5 - TS4/ME4 Area (KD10), below -20mPD	7d/wk-2	0d		02-Nov-15 18*	0d													
Works in TPCWAE Area (Portion 20A, 20B)																			
Removal of Temporary Reclamation																			
Removal of Temporary Reclamation & Form TZ5																			
S87670	Remove general fill /sea wall block	7d/wk-1	24d	20-May-14 08A	08-Oct-14 18	-296d													
S87675	Diaphragm wall saw cutting (1st D Wall cut on 23 Jun 2014)	7d/wk-1	31d	03-Sep-14 08A	16-Oct-14 18	-306d													
S87755	Form TZ5	7d/wk-1	18d	25-Sep-14 08	14-Oct-14 18	-304d													

- Summary Bar
- Actual Level of Effort
- Actual Work
- Remaining Work
- Critical Remaining Work
- Milestone

3 of 18

China State Construction Engineering (Hong Kong) Ltd
 Contract No. HY/2009/15 - Central Wan Chai By Pass - Tunnel (Causeway Bay Typhoon Shelter Section)
WORKS PROGRAMME REV. M

Prepared by William Caluza			
Date	Revision	Checked	Approved
26-Sep...	1st submission		



Activity ID	Activity Name	Calendar	Original Duration	Start	Finish	Total Float	2015				2016								
							Q4	Q1	Q2	Q3	Q4	Q1	Q2	Q3					
S67885	Achievement of KD5	7d/wk-2	0d		16-Oct-14 18	-323d													
S67887	Complete Reinstatement of Vertical Seawall (near PRE Office)	7d/wk-2	0d		27-Oct-14 18	-322d													
Reinstate Mucking Out Access Shaft "C"																			
S67240	Start reinstatement works (after completion of TPCWAW OHVD works)	6d/wk	0d	28-Mar-16 08		-102d													
S67225	Cast slab opening at top of CCT West bound (access shaft)	6d/wk	18d	28-Mar-16 08	16-Apr-16 18	-102d													
S67230	Removal of vertical shaft and backfilling	6d/wk	48d	11-Apr-16 08	04-Jun-16 18	-102d													
S67235	Reinstatement of pavement	6d/wk	12d	30-May-16 08	11-Jun-16 18	-102d													
TPCWAE - OHVD / Cable Trough																			
S5_7405	TPCWAE - Cable Trough (access through temp. opening at TZ5 & Portion 19)	6d/wk	48d	04-Sep-15 08	02-Nov-15 18	0d													
S5_7400	TPCWAE - OHVD Slab AT Area A (access through temp. opening at TZ5 & Portion 19)	6d/wk	48d	04-Sep-15 08	02-Nov-15 18	0d													
S5_59840	Completion of Section 5 - TPCWAE Area (KD10), below -20mPD	7d/wk-2	0d		02-Nov-15 18*	0d													
Works in TPCWAW Area																			
TPCWAW - Temporary Reclamation																			
Temporary Reclamation -																			
S6_9440	TPCWAW - place levelling stone and tamping, South side	7d/wk-1	6d	15-Oct-14 08	20-Oct-14 18	-122d													
S6_9450	TPCWAW - place seawall block to +4 at South side (Qty: 569 nos. @ 50 nos/day)	7d/wk-1	12d	21-Oct-14 08	01-Nov-14 18	-122d													
S6_9465	TPCWAW - place levelling stone and tamping, North side	7d/wk-1	6d	02-Nov-14 08	07-Nov-14 18	-122d													
S6_9470	TPCWAW - place seawall blocks to +4 North side (Qty:672 nos @ 50 nos/day)	7d/wk-1	14d	08-Nov-14 08	21-Nov-14 18	-122d													
S6_9495	TPCWAW - General fill to +2 within the seawall	7d/wk-1	17d	15-Nov-14 08	01-Dec-14 18	-122d													
S6_9490	TPCWAW - place seawall blocks to +4 at the temporary opening	7d/wk-1	7d	02-Dec-14 08	08-Dec-14 18	-122d													
S6_9475	TPCWAW - Remaining General fill to +4 within the seawall	7d/wk-1	10d	09-Dec-14 08	18-Dec-14 18	-122d													
TPCWAW - Diaphragm Wall																			
Diaphragm Wall																			
S6_9385	Site investigation	7d/wk-1	49d	01-Dec-14 08	21-Jan-15 18	-113d													
S6_8960	Install guide wall	7d/wk-1	40d	17-Dec-14 08	28-Jan-15 18	-120d													
S6_8955	Curtain grout along proposed diaphragm wall	7d/wk-1	40d	19-Dec-14 08	30-Jan-15 18	-122d													
S6_9382	Set up bentonite silo/plants and equipments	7d/wk-1	30d	19-Dec-14 08	20-Jan-15 18	-112d													
S6_9345	Diaphragm wall construction (34 panels @ 3 panels/ week)	7d/wk-1	68d	30-Jan-15 08	14-Apr-15 18	-141d													
S6_9350	Install shear pins on diaphragm wall	7d/wk-1	40d	14-Mar-15 08	26-Apr-15 18	-133d													

-  Summary Bar
-  Actual Level of Effort
-  Actual Work
-  Remaining Work
-  Critical Remaining Work
-  Milestone

4 of 18

China State Construction Engineering (Hong Kong) Ltd

Contract No. HY/2009/15 - Central Wan Chai By Pass - Tunnel (Causeway Bay Typhoon Shelter Section)

WORKS PROGRAMME REV. M

Prepared by William Caluza

Date	Revision	Checked	Approved
26-Sep...	1st submission		



中國建築工程(香港)有限公司
CHINA STATE CONSTRUCTION ENGINEERING (HONG KONG) LTD.

Activity ID	Activity Name	Calendar	Original Duration	Start	Finish	Total Float	2015				2016		
							Q4	Q1	Q2	Q3	Q4	Q1	Q2
S6_9355	Install king posts	7d/wk-1	40d	14-Mar-15 08	26-Apr-15 18	-133d			■	Install king posts			
S6_8970	Diaphragm Wall Pile test	7d/wk-1	40d	20-Mar-15 08	03-May-15 18	-129d			■	Diaphragm Wall Pile test			
S6_9375	Carry out contact/fissure grouting	7d/wk-1	29d	21-Mar-15 08	22-Apr-15 18	-141d			■	Carry out contact/fissure grouting			
TPCWAW- ELS Works													
ELS Works													
S6_9360	Install dewatering wells and piezometers	7d/wk-1	20d	30-Mar-15 08	22-Apr-15 18	-141d			■	Install dewatering wells and piezometers			
S6_9365	Install inclinometers inside D-wall	7d/wk-1	20d	15-Apr-15 08	05-May-15 18	-141d			■	Install inclinometers inside D-wall			
S6_8975	Carry out pumping tests	7d/wk-1	12d	23-Apr-15 08	05-May-15 18	-141d			■	Carry out pumping tests			
S6_8980	1st Layer - D Wall conc over break if any & Soft Excavation	7d/wk-1	10d	06-May-15 08	15-May-15 18	-141d			■	1st Layer - D Wall conc over break if any & Soft Excavation			
S6_9260	Submit pumping test report	7d/wk-1	1d	06-May-15 08	06-May-15 18	-137d				Submit pumping test report			
S6_8985	1st Layer - install lateral support	7d/wk-1	10d	16-May-15 08	26-May-15 18	-141d			■	1st Layer - install lateral support			
S6_8990	Install vibrating wire strain gauge	7d/wk-1	10d	16-May-15 08	26-May-15 18	-141d			■	Install vibrating wire strain gauge			
S6_8995	2nd Layer - D Wall conc over break if any & Soft Excavation	7d/wk-1	10d	18-May-15 08	28-May-15 18	-141d			■	2nd Layer - D Wall conc over break if any & Soft Excavation			
S6_9000	2nd Layer - install lateral support	7d/wk-1	10d	29-May-15 08	07-Jun-15 18	-141d			■	2nd Layer - install lateral support			
S6_9005	3rd Layer - D Wall conc over break if any & Soft Excavation	7d/wk-1	10d	31-May-15 08	09-Jun-15 18	-141d			■	3rd Layer - D Wall conc over break if any & Soft Excavation			
S6_9010	3rd Layer - install lateral support	7d/wk-1	10d	10-Jun-15 08	19-Jun-15 18	-141d			■	3rd Layer - install lateral support			
S6_9015	4th Layer - D Wall conc over break if any & Soft Excavation	7d/wk-1	10d	12-Jun-15 08	22-Jun-15 18	-141d			■	4th Layer - D Wall conc over break if any & Soft Excavation			
S6_9020	4th Layer - install lateral support	7d/wk-1	10d	23-Jun-15 08	03-Jul-15 18	-141d			■	4th Layer - install lateral support			
S6_9025	5th Layer - D Wall conc over break if any & Soft Excavation	7d/wk-1	10d	25-Jun-15 08	05-Jul-15 18	-141d			■	5th Layer - D Wall conc over break if any & Soft Excavation			
S6_9030	5th Layer - install lateral support	7d/wk-1	10d	27-Jun-15 08	07-Jul-15 18	-141d			■	5th Layer - install lateral support			
S6_9035	6th Layer - D Wall conc over break if any & Soft Excavation	7d/wk-1	10d	08-Jul-15 08	17-Jul-15 18	-141d			■	6th Layer - D Wall conc over break if any & Soft Excavation			
S6_9040	6th Layer - install lateral support	7d/wk-1	10d	18-Jul-15 08	27-Jul-15 18	-69d			■	6th Layer - install lateral support			
TPCWAW - ROCK EXCAVATION													
S6_6180	Rock excavation to formation	7d/wk-1	112d	18-Jul-15 08	09-Nov-15 18	-141d			■	Rock excavation to formation			
S6_9370	Install tie back anchor to D- Walls (area on west side, near Portion 11)	7d/wk-1	25d	20-Jul-15 08	13-Aug-15 18	-69d			■	Install tie back anchor to D- Walls (area on west side, near Portion 11)			
S6_9415	Install tie back anchor to D- Walls (east area)	7d/wk-1	20d	20-Jul-15 08	08-Aug-15 18	-69d			■	Install tie back anchor to D- Walls (east area)			
S6_9055	Provide Access to WDII Contractor for demolition of bulkhead at Portion 11	7d/wk-2	0d		10-Nov-15 18	-133d			◆	Provide Access to WDII Contractor for demolition of bulkhead			
TPCWAW- CCT RC Structure													
TPCWAW - CCT / OHVD													

- Summary Bar
- Actual Level of Effort
- Actual Work
- Remaining Work
- Critical Remaining Work
- ◆ Milestone

5 of 18

China State Construction Engineering (Hong Kong) Ltd

Contract No. HY/2009/15 - Central Wan Chai By Pass - Tunnel (Causeway Bay Typhoon Shelter Section)

WORKS PROGRAMME REV. M

Prepared by William Caluza

Date	Revision	Checked	Approved
26-Sep...	1st submission		



中國建築工程(香港)有限公司
CHINA STATE CONSTRUCTION ENGINEERING HONG KONG LTD.

Activity ID	Activity Name	Calendar	Original Duration	Start	Finish	Total Float	2015				2016							
							Q4	Q1	Q2	Q3	Q4	Q1	Q2	Q3				
A8705	SR8 Bench Excavation From West, CH 4065- 4075 = 10m	7d/wk-1a	20d	25-Sep-14 08	15-Oct-14 18	148d												
A8685	SR8 Bench Excavation From West, CH 4075- 4085 = 10m	7d/wk-1a	20d	16-Oct-14 08	04-Nov-14 18	148d												
A8680	SR8 Bench Excavation From West, CH 4085- 4095 = 10m	7d/wk-1a	20d	05-Nov-14 08	24-Nov-14 18	148d												
A8725	SR8 Bench Excavation From West, CH 4095- 4100 = 5m	7d/wk-1a	10d	25-Nov-14 08	04-Dec-14 18	148d												
From East (TS4)																		
Heading Excavation (2d/m, 24h/day work shift, 7d/week, no work on statutory holiday)																		
A8495	SR8 Heading Excavation From East CH 4115- 4107 = 8m @2d/m	7d/wk-1a	16d	15-Sep-14 08 A	28-Sep-14 18	10d												
Bench Excavation (1.5d/m, 20m separation with heading)																		
A8455	SR8 Bench Excavation From East, CH 4147.5- 4135 = 12.5m	7d/wk-1a	19d	20-Sep-14 08	09-Oct-14 18	0d												
A8470	SR8 Bench Excavation From East, CH 4135- 4125 = 10m	7d/wk-1a	15d	10-Oct-14 08	24-Oct-14 18	0d												
A8460	SR8 Bench Excavation From East, CH 4125- 4115 = 10m	7d/wk-1a	15d	25-Oct-14 08	08-Nov-14 18	0d												
A8465	SR8 Bench Excavation From East, CH 4115- 4100 = 15m	7d/wk-1a	23d	09-Nov-14 08	01-Dec-14 18	0d												
Tunnel Lining Works																		
From West - Base Slab (10m/bay, 10m separation with benching excavation)																		
A8525	SR8, From West, CH 4015 - 4025 = 10m/bay, base slab	7d/wk-1a	10d	15-Sep-14 08 A	04-Oct-14 18	137d												
A8530	SR8, From West, CH 4025 - 4035 = 10m/bay, base slab	7d/wk-1a	10d	05-Oct-14 08	14-Oct-14 18	163d												
A8535	SR8, From West, CH 4035 - 4045 = 10m/bay, base slab	7d/wk-1a	8d	15-Oct-14 08	22-Oct-14 18	165d												
A8540	SR8, From West, CH 4045 - 4055 = 10m/bay, base slab	7d/wk-1a	8d	23-Oct-14 08	30-Oct-14 18	165d												
A8545	SR8, From West, CH 4055 - 4065 = 10m/bay, base slab	7d/wk-1a	8d	05-Nov-14 08	12-Nov-14 18	160d												
A8550	SR8, From West, CH 4065 - 4075 = 10m/bay, base slab	7d/wk-1a	8d	25-Nov-14 08	02-Dec-14 18	148d												
A8555	SR8, From West, CH 4075 - 4085 = 10m/bay, base slab	7d/wk-1a	8d	05-Dec-14 08	12-Dec-14 18	148d												
A8560	SR8, From West, CH 4085 - 4095 = 10m/bay, base slab	7d/wk-1a	8d	13-Dec-14 08	20-Dec-14 18	150d												
A8561	SR8, From West, CH 4095 - 4105 = 10m/bay, base slab	7d/wk-1a	8d	21-Dec-14 08	29-Dec-14 18	152d												
A8562	SR8, From West, CH 4105 - 4115 = 10m/bay, base slab	7d/wk-1a	8d	30-Dec-14 08	07-Jan-15 18	154d												
From West - Lining (5m/bay, 10m separation with base slab)																		
A8575	SR8, From West, CH 3995 - 4000 = 1bay, lining	7d/wk-1a	9d	20-Sep-14 08	28-Sep-14 18	0d												
A8580	SR8, From West, CH 4000 - 4005 = 1bay, lining	7d/wk-1a	9d	05-Oct-14 08	13-Oct-14 18	137d												
A8585	SR8, From West, CH 4005 - 4010 = 1bay, lining	7d/wk-1a	9d	14-Oct-14 08	22-Oct-14 18	137d												
A8590	SR8, From West, CH 4010 - 4015 = 1bay, lining	7d/wk-1a	9d	23-Oct-14 08	31-Oct-14 18	137d												

- Summary Bar
- ▬ Actual Level of Effort
- ▬ Actual Work
- ▬ Remaining Work
- ▬ Critical Remaining Work
- ◆ Milestone

China State Construction Engineering (Hong Kong) Ltd
 Contract No. HY/2009/15 - Central Wan Chai By Pass - Tunnel (Causeway Bay Typhoon Shelter Section)
WORKS PROGRAMME REV. M

Prepared by William Caluza			
Date	Revision	Checked	Approved
26-Sep...	1st submission		



Activity ID	Activity Name	Calendar	Original Duration	Start	Finish	Total Float	2015				2016						
							Q4	Q1	Q2	Q3	Q4	Q1	Q2	Q3			
A8595	SR8, From West, CH 4015 - 4020 = 1bay, lining	7d/wk-1a	9d	01-Nov-14 08	09-Nov-14 18	137d											
A8600	SR8, From West, CH 4020 - 4025 = 1bay, lining	7d/wk-1a	9d	10-Nov-14 08	18-Nov-14 18	137d											
A8605	SR8, From West, CH 4025 - 4030 = 1bay, lining	7d/wk-1a	5d	19-Nov-14 08	23-Nov-14 18	137d											
A8610	SR8, From West, CH 4030 - 4035 = 1bay, lining	7d/wk-1a	5d	24-Nov-14 08	28-Nov-14 18	137d											
A8615	SR8, From West, CH 4035 - 4040 = 1bay, lining	7d/wk-1a	5d	29-Nov-14 08	03-Dec-14 18	137d											
A8620	SR8, From West, CH 4040 - 4045 = 1bay, lining	7d/wk-1a	5d	04-Dec-14 08	08-Dec-14 18	137d											
A8625	SR8, From West, CH 4045 - 4050 = 1bay, lining	7d/wk-1a	5d	09-Dec-14 08	13-Dec-14 18	137d											
A8630	SR8, From West, CH 4050 - 4055 = 1bay, lining	7d/wk-1a	5d	14-Dec-14 08	18-Dec-14 18	137d											
A8635	SR8, From West, CH 4055 - 4060 = 1bay, lining	7d/wk-1a	5d	19-Dec-14 08	23-Dec-14 18	137d											
A8640	SR8, From West, CH 4060 - 4065 = 1bay, lining	7d/wk-1a	5d	24-Dec-14 08	29-Dec-14 18	137d											
A8645	SR8, From West, CH 4065 - 4070 = 1bay, lining	7d/wk-1a	5d	30-Dec-14 08	04-Jan-15 18	137d											
A8647	SR8, From West, CH 4070 - 4075 = 1bay, lining	7d/wk-1a	5d	05-Jan-15 08	09-Jan-15 18	137d											
A8648	SR8, From West, CH 4075 - 4080 = 1bay, lining	7d/wk-1a	5d	10-Jan-15 08	14-Jan-15 18	137d											
A8649	SR8, From West, CH 4080 - 4085 = 1bay, lining	7d/wk-1a	5d	15-Jan-15 08	19-Jan-15 18	137d											
A8651	SR8, From West, CH 4085 - 4090 = 1bay, lining	7d/wk-1a	5d	20-Jan-15 08	24-Jan-15 18	137d											
A8652	SR8, From West, CH 4090 - 4095 = 1bay, lining	7d/wk-1a	5d	25-Jan-15 08	29-Jan-15 18	137d											
A8653	SR8, From West, CH 4095 - 4100 = 1bay, lining	7d/wk-1a	5d	30-Jan-15 08	03-Feb-15 18	137d											
A8654	SR8, From West, CH 4100 - 4105 = 1bay, lining	7d/wk-1a	5d	04-Feb-15 08	08-Feb-15 18	137d											
From East - Base Slab (10m/bay, 10m separation with benching excavation)																	
A9775	SR8 From East, CH 4149.5 - 4145 = 4.5m, base slab	7d/wk-1a	8d	02-Dec-14 08	09-Dec-14 18	0d											
A9780	SR8 From East, CH 4145 - 4135 = 10m/bay, base slab	7d/wk-1a	8d	10-Dec-14 08	17-Dec-14 18	0d											
A9785	SR8 From East, CH 4135 - 4125 = 10m/bay, base slab	7d/wk-1a	8d	18-Dec-14 08	26-Dec-14 18	8d											
A9786	SR8 From East, CH 4125 - 4115 = 10m/bay, base slab	7d/wk-1a	8d	27-Dec-14 08	04-Jan-15 18	10d											
From East - Lining (5m/bay, 10m separation with base slab)																	
A9820	From East, SR8 CH 4149.5 - 4145 = 4.5m, 1 bay, lining	7d/wk-1a	5d	18-Dec-14 08	22-Dec-14 18	0d											
A9815	From East, SR8 CH 4145 - 4140 = 1bay, lining	7d/wk-1a	5d	23-Dec-14 08	28-Dec-14 18	6d											
A9810	From East, SR8 CH 4140 - 4135 = 1bay, lining	7d/wk-1a	5d	29-Dec-14 08	03-Jan-15 18	6d											
A9805	From East, SR8 CH 4135 - 4130 = 1bay, lining	7d/wk-1a	5d	04-Jan-15 08	08-Jan-15 18	6d											

- Summary Bar
- Actual Level of Effort
- Actual Work
- Remaining Work
- Critical Remaining Work
- ◆ Milestone

8 of 18

China State Construction Engineering (Hong Kong) Ltd

Contract No. HY/2009/15 - Central Wan Chai By Pass - Tunnel (Causeway Bay Typhoon Shelter Section)

WORKS PROGRAMME REV. M

Prepared by William Caluza

Date	Revision	Checked	Approved
26-Sep...	1st submission		



中國建築工程(香港)有限公司
CHINA STATE CONSTRUCTION ENGINEERING (HONG KONG) LTD.

Activity ID	Activity Name	Calendar	Original Duration	Start	Finish	Total Float	2015				2016		
							Q4	Q1	Q2	Q3	Q4	Q1	Q2
A9870	From East, SR8 CH 4130 - 4125 = 1bay, lining	7d/wk-1a	5d	09-Jan-15 08	13-Jan-15 18	6d		■	From East, SR8 CH 4130 - 4125 = 1bay, lining				
A9800	From East, SR8 CH 4125 - 4120 = 1bay, lining	7d/wk-1a	5d	14-Jan-15 08	18-Jan-15 18	143d		■	From East, SR8 CH 4125 - 4120 = 1bay, lining				
A9860	From East, SR8 CH 4120 - 4115 = 1bay, lining	7d/wk-1a	5d	19-Jan-15 08	23-Jan-15 18	143d		■	From East, SR8 CH 4120 - 4115 = 1bay, lining				
A9855	From East, SR8 CH 4115 - 4110 = 1bay, lining	7d/wk-1a	5d	24-Jan-15 08	28-Jan-15 18	143d		■	From East, SR8 CH 4115 - 4110 = 1bay, lining				
A9850	From East, SR8 CH 4110 - 4105 = 1bay, lining	7d/wk-1a	5d	29-Jan-15 08	02-Feb-15 18	143d		■	From East, SR8 CH 4110 - 4105 = 1bay, lining				
OHVD(10m/bay) / Utility Trough													
A8570	SR8 Tunnel OHVD and utility trough =, 167= 17 bays @ 10m/bay @ 7d/bay	7d/wk-1a	120d	09-Feb-15 08	13-Jun-15 18	137d		■	SR8 Tunnel OHVD and utility trough =, 167= 17 bays @ 10m/bay @ 7d/bay				
EB Outer Tunnel Excavation													
From West (TPCWAE)													
Outer Bench Excavation (1.5d - 2d/m, 20m separation with heading)													
A9550	EB, Outer Bench From West, CH 4035- 4045 = 10m	7d/wk-1a	30d	07-Aug-14 08 A	20-Oct-14 18	135d	■		EB, Outer Bench From West, CH 4035- 4045 = 10m				
A9555	EB, Outer Bench From West, CH 4045- 4055 = 10m (2d/m)	7d/wk-1a	20d	20-Oct-14 08	08-Nov-14 18	135d	■		EB, Outer Bench From West, CH 4045- 4055 = 10m (2d/m)				
A9560	EB, Outer Bench From West, CH 4055- 4065 = 10m (2d/m)	7d/wk-1a	20d	09-Nov-14 08	28-Nov-14 18	135d	■		EB, Outer Bench From West, CH 4055- 4065 = 10m (2d/m)				
A9565	EB, Outer Bench From West, CH 4065- 4075 = 10m (2d/m)	7d/wk-1a	20d	29-Nov-14 08	18-Dec-14 18	135d	■		EB, Outer Bench From West, CH 4065- 4075 = 10m (2d/m)				
A9520	EB, Outer Bench From West, CH 4075- 4085 = 10m (2d/m)	7d/wk-1a	20d	19-Dec-14 08	09-Jan-15 18	135d	■		EB, Outer Bench From West, CH 4075- 4085 = 10m (2d/m)				
A9545	EB, Outer Bench From West, CH 4085- 4095 = 10m 1.5d/m)	7d/wk-1a	15d	10-Jan-15 08	24-Jan-15 18	135d	■		EB, Outer Bench From West, CH 4085- 4095 = 10m 1.5d/m)				
From East (TS4)													
Outer Bench Excavation (1.5d-2d/m, 20m separation with heading)													
A9605	EB, Outer Bench From East, CH 4147.5 - 4145 = 2.5m	7d/wk-1a	30d	20-Oct-14 08*	18-Nov-14 18	120d	■		EB, Outer Bench From East, CH 4147.5 - 4145 = 2.5m				
A9610	EB, Outer Bench From East, CH 4145- 4135 = 10m (2d/m)	7d/wk-1a	20d	19-Nov-14 08	08-Dec-14 18	120d	■		EB, Outer Bench From East, CH 4145- 4135 = 10m (2d/m)				
A9615	EB, Outer Bench From East, CH 4135- 4125 = 10m (2d/m)	7d/wk-1a	20d	09-Dec-14 08	29-Dec-14 18	120d	■		EB, Outer Bench From East, CH 4135- 4125 = 10m (2d/m)				
A9620	EB, Outer Bench From East, CH 4125- 4115 = 10m (2d/m)	7d/wk-1a	20d	30-Dec-14 08	19-Jan-15 18	120d	■		EB, Outer Bench From East, CH 4125- 4115 = 10m (2d/m)				
A9625	EB, Outer Bench From East, CH 4115- 4105 = 10m (2d/m)	7d/wk-1a	20d	20-Jan-15 08	08-Feb-15 18	120d	■		EB, Outer Bench From East, CH 4115- 4105 = 10m (2d/m)				
A9630	EB, Outer Bench From East, CH 4105- 4095 = 10m (1.5d/m)	7d/wk-1a	15d	09-Feb-15 08	26-Feb-15 18	120d	■		EB, Outer Bench From East, CH 4105- 4095 = 10m (1.5d/m)				
EB (Inner Tunnel Excavation + Lining)													
From West (TPCWAE)													
Inner Heading Excavation (2d/m, 24h/day work shift, 7d/week, no work on statutory holiday)													
A8805	EB, Inner Heading From West, CH 3992- 4005 = 13m @3d/m	7d/wk-1a	39d	29-Sep-14 08	07-Nov-14 18	0d	■		EB, Inner Heading From West, CH 3992- 4005 = 13m @3d/m				
A8815	EB, Inner Heading From West, CH 4005- 4015 = 10m @2d/m	7d/wk-1a	20d	08-Nov-14 08	27-Nov-14 18	0d	■		EB, Inner Heading From West, CH 4005- 4015 = 10m @2d/m				

- Summary Bar
- Actual Level of Effort
- Actual Work
- Remaining Work
- Critical Remaining Work
- ◆ Milestone

9 of 18

China State Construction Engineering (Hong Kong) Ltd

Contract No. HY/2009/15 - Central Wan Chai By Pass - Tunnel (Causeway Bay Typhoon Shelter Section)

WORKS PROGRAMME REV. M

Prepared by William Caluza

Date	Revision	Checked	Approved
26-Sep...	1st submission		



中國建築工程(香港)有限公司
CHINA STATE CONSTRUCTION ENGINEERING (HONG KONG) LTD.

Activity ID	Activity Name	Calendar	Original Duration	Start	Finish	Total Float	2015				2016							
							Q4	Q1	Q2	Q3	Q4	Q1	Q2	Q3				
A8820	EB,Inner Heading From West , CH 4015- 4025 = 10m @2d/m	7d/wk-1a	20d	28-Nov-14 08	17-Dec-14 18	0d		■										
A8780	EB,Inner Heading From West, CH 4025- 4035 = 10m @2d/m	7d/wk-1a	20d	18-Dec-14 08	08-Jan-15 18	0d		■										
A8810	EB,Inner Heading From West , CH 4035- 4045 = 10m @2d/m	7d/wk-1a	20d	09-Jan-15 08	28-Jan-15 18	0d		■										
A8785	EB,Inner Heading From West , CH 4045- 4055 = 10m @2d/m	7d/wk-1a	20d	29-Jan-15 08	17-Feb-15 18	0d		■										
A8790	EB,Inner Heading From West, CH 4055- 4065 = 10m @ 2d/m	7d/wk-1a	20d	18-Feb-15 08	12-Mar-15 18	0d		■										
A8795	EB,Inner Heading From West , CH 4065- 4075 = 10m, @ 2d/m	7d/wk-1a	20d	13-Mar-15 08	01-Apr-15 18	0d		■										
A8800	EB,Inner Heading From West, CH 4075- 4085 = 10m @ 2d/m	7d/wk-1a	20d	02-Apr-15 08	22-Apr-15 18	0d		■										
A8825	EB,Inner Heading From West, CH 4085- 4095 = 10m @ 2d/m	7d/wk-1a	20d	23-Apr-15 08	13-May-15 18	0d		■										
Inner Bench Excavation (1.5-2d/m, 20m separation with heading)																		
A8765	EB, Inner Bench From West, CH 3992-4005 = 13m (2d/m)	7d/wk-1a	26d	08-Nov-14 08	03-Dec-14 18	23d		■										
A8770	EB, Inner Bench From West,CH 4005- 4015 = 10m	7d/wk-1a	15d	18-Dec-14 08	03-Jan-15 18	9d		■										
A8775	EB, Inner Bench From West,CH 4015- 4025 = 10m	7d/wk-1a	15d	09-Jan-15 08	23-Jan-15 18	4d		■										
A8735	EB, Inner Bench From West,CH 4025- 4035 = 10m	7d/wk-1a	15d	29-Jan-15 08	12-Feb-15 18	14d		■										
A8740	EB, Inner Bench From West,CH 4035- 4045 = 10m	7d/wk-1a	15d	18-Feb-15 08	07-Mar-15 18	11d		■										
A8745	EB, Inner Bench From West,CH 4045- 4055 = 10m	7d/wk-1a	15d	13-Mar-15 08	27-Mar-15 18	6d		■										
A8750	EB, Inner Bench From West,CH 4055- 4065 = 10m	7d/wk-1a	15d	02-Apr-15 08	17-Apr-15 18	1d		■										
A8755	EB, Inner Bench From West,CH 4065- 4075 = 10m	7d/wk-1a	15d	18-Apr-15 08	03-May-15 18	1d		■										
A8760	EB, Inner Bench From West,CH 4075- 4085 = 10m	7d/wk-1a	15d	05-May-15 08	19-May-15 18	0d		■										
A8761	EB, Inner Bench From West,CH 4085- 4095 = 10m	7d/wk-1a	15d	20-May-15 08	03-Jun-15 18	0d		■										
From East (TS4)																		
Inner Heading Excavation (3d/m, 24h/day work shift, 7d/week, no work on statutory holiday)																		
A8835	EB,Inner Heading From East, CH 4147.5 to 4145 = 2.5m, @ 3d/m	7d/wk-1a	8d	06-Jan-15 08	13-Jan-15 18	0d		■										
A8850	EB,Inner Heading From East, CH 4145- 4135 = 10m, @ 3d/m	7d/wk-1a	30d	14-Jan-15 08	12-Feb-15 18	0d		■										
A8830	EB,Inner Heading From East, CH 4135- 4125 = 10m @2d/m	7d/wk-1a	20d	13-Feb-15 08	07-Mar-15 18	0d		■										
A8840	EB,Inner Heading From East, CH 4125- 4115 = 10m @2d/m	7d/wk-1a	20d	08-Mar-15 08	27-Mar-15 18	0d		■										
A9910	EB,Inner Heading From East, CH 4115- 4105 = 10m @2d/m	7d/wk-1a	20d	28-Mar-15 08	17-Apr-15 18	0d		■										
A8845	EB,Inner Heading From East, CH 4105- 4095 = 10m @2d/m	7d/wk-1a	20d	18-Apr-15 08	08-May-15 18	0d		■										
Inner Bench Excavation (1.5d-2d/m, 20m separation with heading)																		
A8860	EB,Inner Bench From East, CH 4147.5 - 4145 = 2.5m	7d/wk-1a	4d	08-Mar-15 08	11-Mar-15 18	11d		■										

- Summary Bar
- Actual Level of Effort
- Actual Work
- Remaining Work
- Critical Remaining Work
- ◆ Milestone

10 of 18

China State Construction Engineering (Hong Kong) Ltd

Contract No. HY/2009/15 - Central Wan Chai By Pass - Tunnel (Causeway Bay Typhoon Shelter Section)

WORKS PROGRAMME REV. M

Prepared by William Caluza			
Date	Revision	Checked	Approved
26-Sep...	1st submission		

中國建築工程(香港)有限公司

CHINA STATE CONSTRUCTION ENGINEERING (HONG KONG) LTD.

Activity ID	Activity Name	Calendar	Original Duration	Start	Finish	Total Float	2015				2016			
							Q4	Q1	Q2	Q3	Q4	Q1	Q2	Q3
A8865	EB, Inner Bench From East, CH 4145- 4135 = 10m	7d/wk-1a	15d	12-Mar-15 08	26-Mar-15 18	11d			■ EB, Inner Bench From East, CH 4145- 4135 = 10m					
A8870	EB, Inner Bench From East, CH 4135- 4125 = 10m	7d/wk-1a	15d	28-Mar-15 08	12-Apr-15 18	10d			■ EB, Inner Bench From East, CH 4135- 4125 = 10m					
A8855	EB, Inner Bench From East, CH 4125- 4115 = 10m	7d/wk-1a	15d	18-Apr-15 08	03-May-15 18	5d			■ EB, Inner Bench From East, CH 4125- 4115 = 10m					
A8875	EB, Inner Bench From East, CH 4115- 4105 = 10m	7d/wk-1a	15d	09-May-15 08	23-May-15 18	0d			■ EB, Inner Bench From East, CH 4115- 4105 = 10m					
A9915	EB, Inner Bench From East, CH 4105- 4095 = 10m	7d/wk-1a	15d	24-May-15 08	08-Jun-15 18	0d			■ EB, Inner Bench From East, CH 4105- 4095 = 10m					
Tunnel Lining Works														
From West Base Slab (10m/bay, 10m separation with benching excavation)														
A8900	EB From West, Base Slab CH 3990 - 3995 = 1 bay	7d/wk-1a	10d	04-Dec-14 08	13-Dec-14 18	33d			■ EB From West, Base Slab CH 3990 - 3995 = 1 bay					
A8890	EB From West, Base Slab CH 3995 - 4005 = 10m/bay	7d/wk-1a	10d	04-Jan-15 08	13-Jan-15 18	14d			■ EB From West, Base Slab CH 3995 - 4005 = 10m/bay					
A8905	EB From West, Base Slab CH 4005 - 4015 = 10m/bay	7d/wk-1a	10d	24-Jan-15 08	02-Feb-15 18	4d			■ EB From West, Base Slab CH 4005 - 4015 = 10m/bay					
A8910	EB From West, Base Slab CH 4015 - 4025 = 10m/bay	7d/wk-1a	10d	13-Feb-15 08	25-Feb-15 18	14d			■ EB From West, Base Slab CH 4015 - 4025 = 10m/bay					
A8915	EB From West, Base Slab CH 4025 - 4035 = 10m/bay	7d/wk-1a	10d	08-Mar-15 08	17-Mar-15 18	12d			■ EB From West, Base Slab CH 4025 - 4035 = 10m/bay					
A8920	EB From West, Base Slab CH 4035 - 4045 = 10m/bay	7d/wk-1a	10d	28-Mar-15 08	07-Apr-15 18	8d			■ EB From West, Base Slab CH 4035 - 4045 = 10m/bay					
A8925	EB From West, Base Slab CH 4045 - 4055 = 10m/bay	7d/wk-1a	10d	18-Apr-15 08	27-Apr-15 18	4d			■ EB From West, Base Slab CH 4045 - 4055 = 10m/bay					
A8930	EB From West, Base Slab CH 4055 - 4065 = 10m/bay	7d/wk-1a	10d	04-May-15 08	13-May-15 18	5d			■ EB From West, Base Slab CH 4055 - 4065 = 10m/bay					
A8880	EB From West, Base Slab CH 4065 - 4075 = 10m/bay	7d/wk-1a	10d	20-May-15 08	29-May-15 18	5d			■ EB From West, Base Slab CH 4065 - 4075 = 10m/bay					
A8885	EB From West, Base Slab CH 4075 - 4085 = 10m/bay	7d/wk-1a	10d	04-Jun-15 08	13-Jun-15 18	0d			■ EB From West, Base Slab CH 4075 - 4085 = 10m/bay					
A8895	EB From West, Base Slab CH 4085 - 4095 = 10m/bay	7d/wk-1a	10d	14-Jun-15 08	24-Jun-15 18	0d			■ EB From West, Base Slab CH 4085 - 4095 = 10m/bay					
From East Base Slab (10m/bay, 10m separation with benching excavation)														
A9905	EB From East, Base Slab CH 4149.5 - 4145 = 4.5m	7d/wk-1a	10d	13-Apr-15 08	22-Apr-15 18	26d			■ EB From East, Base Slab CH 4149.5 - 4145 = 4.5m					
A9900	EB From East, Base Slab CH 4145 - 4135 = 10m/bay	7d/wk-1a	10d	04-May-15 08	13-May-15 18	16d			■ EB From East, Base Slab CH 4145 - 4135 = 10m/bay					
A9895	EB From East, Base Slab CH 4135 - 4125 = 10m/bay	7d/wk-1a	10d	24-May-15 08	02-Jun-15 18	6d			■ EB From East, Base Slab CH 4135 - 4125 = 10m/bay					
A9890	EB From East, Base Slab CH 4125 - 4115 = 10m/bay	7d/wk-1a	10d	09-Jun-15 08	18-Jun-15 18	0d			■ EB From East, Base Slab CH 4125 - 4115 = 10m/bay					
A9885	EB From East, Base Slab CH 4115 - 4105 = 10m/bay	7d/wk-1a	10d	19-Jun-15 08	29-Jun-15 18	0d			■ EB From East, Base Slab CH 4115 - 4105 = 10m/bay					
A9880	EB From East, Base Slab CH 4105 - 4095 = 10m/bay	7d/wk-1a	10d	30-Jun-15 08	10-Jul-15 18	0d			■ EB From East, Base Slab CH 4105 - 4095 = 10m/bay					
Lining (5m/bay, 15m separation with base slab)														
A9065	EB From West, Lining CH 3990 - 3995 = 1bay	7d/wk-1a	10d	03-Feb-15 08	12-Feb-15 18	4d			■ EB From West, Lining CH 3990 - 3995 = 1bay					
A9005	EB From West, Lining CH 3995 - 4000 = 1bay	7d/wk-1a	10d	13-Feb-15 08	25-Feb-15 18	4d			■ EB From West, Lining CH 3995 - 4000 = 1bay					
A9090	EB From West, Lining CH 4000 - 4005 = 1bay	7d/wk-1a	10d	26-Feb-15 08	07-Mar-15 18	4d			■ EB From West, Lining CH 4000 - 4005 = 1bay					

- Summary Bar
- Actual Level of Effort
- Actual Work
- Remaining Work
- Critical Remaining Work
- Milestone

11 of 18

China State Construction Engineering (Hong Kong) Ltd

Contract No. HY/2009/15 - Central Wan Chai By Pass - Tunnel (Causeway Bay Typhoon Shelter Section)

WORKS PROGRAMME REV. M

Prepared by William Caluza

Date	Revision	Checked	Approved
26-Sep...	1st submission		



中國建築工程(香港)有限公司
CHINA STATE CONSTRUCTION ENGINEERING (HONG KONG) LTD.

Activity ID	Activity Name	Calendar	Original Duration	Start	Finish	Total Float	2015				2016		
							Q4	Q1	Q2	Q3	Q4	Q1	Q2
A9050	EB From West, Lining CH 4005 - 4010 = 1bay	7d/wk-1a	10d	08-Mar-15 08	17-Mar-15 18	4d			■ EB From West, Lining CH 4005 - 4010 = 1bay				
A9055	EB From West, Lining CH 4010 - 4015 = 1bay	7d/wk-1a	10d	18-Mar-15 08	27-Mar-15 18	4d			■ EB From West, Lining CH 4010 - 4015 = 1bay				
A9080	EB From West, Lining CH 4015 - 4020 = 1bay	7d/wk-1a	10d	26-Mar-15 08	05-Apr-15 18	4d			■ EB From West, Lining CH 4015 - 4020 = 1bay				
A9070	EB From West, Lining CH 4020 - 4025 = 1bay	7d/wk-1a	10d	03-Apr-15 08	13-Apr-15 18	4d			■ EB From West, Lining CH 4020 - 4025 = 1bay				
A9075	EB From West, Lining CH 4025 - 4030 = 1bay	7d/wk-1a	10d	12-Apr-15 08	21-Apr-15 18	4d			■ EB From West, Lining CH 4025 - 4030 = 1bay				
A9080	EB From West, Lining CH 4030 - 4035 = 1bay	7d/wk-1a	10d	20-Apr-15 08	29-Apr-15 18	4d			■ EB From West, Lining CH 4030 - 4035 = 1bay				
A9085	EB From West, Lining CH 4035 - 4040 = 1bay	7d/wk-1a	10d	28-Apr-15 08	08-May-15 18	4d			■ EB From West, Lining CH 4035 - 4040 = 1bay				
A9015	EB From West, Lining CH 4040 - 4045 = 1bay	7d/wk-1a	10d	07-May-15 08	16-May-15 18	4d			■ EB From West, Lining CH 4040 - 4045 = 1bay				
A9020	EB From West, Lining CH 4045 - 4050 = 1bay	7d/wk-1a	10d	15-May-15 08	24-May-15 18	4d			■ EB From West, Lining CH 4045 - 4050 = 1bay				
A9025	EB From West, Lining CH 4050 - 4055 = 1bay	7d/wk-1a	10d	23-May-15 08	01-Jun-15 18	4d			■ EB From West, Lining CH 4050 - 4055 = 1bay				
A9030	EB From West, Lining CH 4055 - 4060 = 1bay	7d/wk-1a	10d	31-May-15 08	09-Jun-15 18	4d			■ EB From West, Lining CH 4055 - 4060 = 1bay				
A9035	EB From West, Lining CH 4060 - 4065 = 1bay	7d/wk-1a	10d	07-Jun-15 08	16-Jun-15 18	4d			■ EB From West, Lining CH 4060 - 4065 = 1bay				
A9040	EB From West, Lining CH 4065 - 4070 = 1bay	7d/wk-1a	10d	14-Jun-15 08	24-Jun-15 18	4d			■ EB From West, Lining CH 4065 - 4070 = 1bay				
A9045	EB From West, Lining CH 4070 - 4075 = 1bay	7d/wk-1a	10d	25-Jun-15 08	05-Jul-15 18	0d			■ EB From West, Lining CH 4070 - 4075 = 1bay				
A8955	EB From West, Lining CH 4075 - 4080 = 1bay	7d/wk-1a	10d	30-Jun-15 08	10-Jul-15 18	0d			■ EB From West, Lining CH 4075 - 4080 = 1bay				
A8960	EB From West, Lining CH 4080 - 4085 = 1bay	7d/wk-1a	5d	11-Jul-15 08	15-Jul-15 18	0d			■ EB From West, Lining CH 4080 - 4085 = 1bay				
A8970	EB From West, Lining CH 4085 - 4090 = 1bay	7d/wk-1a	5d	16-Jul-15 08	20-Jul-15 18	0d			■ EB From West, Lining CH 4085 - 4090 = 1bay				
A8975	EB From West, Lining CH 4090 - 4095 = 1bay	7d/wk-1a	5d	21-Jul-15 08	25-Jul-15 18	0d			■ EB From West, Lining CH 4090 - 4095 = 1bay				
A8980	EB From West, Lining CH 4095 - 4100 = 1bay	7d/wk-1a	5d	26-Jul-15 08	30-Jul-15 18	0d			■ EB From West, Lining CH 4095 - 4100 = 1bay				
A8985	EB From West, Lining CH 4100 - 4105 = 1bay	7d/wk-1a	5d	31-Jul-15 08	04-Aug-15 18	0d			■ EB From West, Lining CH 4100 - 4105 = 1bay				
A8990	EB From West, Lining CH 4105 - 4110 = 1bay	7d/wk-1a	5d	05-Aug-15 08	09-Aug-15 18	0d			■ EB From West, Lining CH 4105 - 4110 = 1bay				
A8995	EB From West, Lining CH 4110 - 4115 = 1bay	7d/wk-1a	5d	10-Aug-15 08	14-Aug-15 18	0d			■ EB From West, Lining CH 4110 - 4115 = 1bay				
A9000	EB From West, Lining CH 4115 - 4120 = 1bay	7d/wk-1a	5d	15-Aug-15 08	19-Aug-15 18	0d			■ EB From West, Lining CH 4115 - 4120 = 1bay				
A9010	EB From West, Lining CH 4120 - 4125 = 1bay	7d/wk-1a	5d	20-Aug-15 08	24-Aug-15 18	0d			■ EB From West, Lining CH 4120 - 4125 = 1bay				
A8965	EB From West, Lining CH 4125 - 4130 = 1bay	7d/wk-1a	5d	25-Aug-15 08	29-Aug-15 18	0d			■ EB From West, Lining CH 4125 - 4130 = 1bay				
A8935	EB From West, Lining CH 4130 - 4135 = 1bay	7d/wk-1a	5d	30-Aug-15 08	03-Sep-15 18	0d			■ EB From West, Lining CH 4130 - 4135 = 1bay				
A8940	EB From West, Lining CH 4135 - 4140 = 1bay	7d/wk-1a	5d	04-Sep-15 08	08-Sep-15 18	0d			■ EB From West, Lining CH 4135 - 4140 = 1bay				
A8945	EB From West, Lining CH 4140 - 4145 = 1bay	7d/wk-1a	5d	09-Sep-15 08	13-Sep-15 18	0d			■ EB From West, Lining CH 4140 - 4145 = 1bay				
A8950	EB From West, Lining CH 4145 - 4149.5 = 4.5m	7d/wk-1a	5d	14-Sep-15 08	18-Sep-15 18	0d			■ EB From West, Lining CH 4145 - 4149.5 = 4.5m				

- Summary Bar
- Actual Level of Effort
- Actual Work
- Remaining Work
- Critical Remaining Work
- ◆ Milestone

12 of 18

China State Construction Engineering (Hong Kong) Ltd

Contract No. HY/2009/15 - Central Wan Chai By Pass - Tunnel (Causeway Bay Typhoon Shelter Section)

WORKS PROGRAMME REV. M

Prepared by William Caluza			
Date	Revision	Checked	Approved
26-Sep-...	1st submission		



Activity ID	Activity Name	Calendar	Original Duration	Start	Finish	Total Float	2015				2016					
							Q4	Q1	Q2	Q3	Q4	Q1	Q2	Q3		
OHVD(10m/bay) / Utility Trough																
A9095	EB From West OHVD and utility trough =, 167= 17 bays @ 10m/bay @ 7d/bay	7d/wk-1a	120d	03-Jul-15 08	02-Nov-15 18	0d										
WB Outer Tunnel Excavation																
From West (TPCWAE)																
Outer Heading Excavation (2d/m, 24h/day work shift, 7d/week, no work on statutory holiday)																
A9651	WB, Outer Heading From West, CH 4085- 4092.5 = 7.5m @ 2d/m	7d/wk-1a	15d	13-Sep-14 08 A	30-Sep-14 18	163d										
Outer Bench Excavation (1.5d-2d/m, 20m separation with heading)																
A9680	WB, Outer Bench From West, CH 4025- 4035 = 10m	7d/wk-1a	15d	12-Oct-14 08	26-Oct-14 18	163d										
A9665	WB, Outer Bench From West, CH 4035- 4045 = 10m	7d/wk-1a	15d	27-Oct-14 08	10-Nov-14 18	163d										
A9670	WB, Outer Bench From West, CH 4045- 4055 = 10m	7d/wk-1a	15d	11-Nov-14 08	25-Nov-14 18	163d										
A9675	WB, Outer Bench From West, CH 4055- 4065 = 10m	7d/wk-1a	15d	26-Nov-14 08	10-Dec-14 18	163d										
A9700	WB, Outer Bench From West, CH 4065- 4075 = 10m	7d/wk-1a	15d	11-Dec-14 08	26-Dec-14 18	163d										
A9701	WB, Outer Bench From West, CH 4075- 4082.5 = 7.5m	7d/wk-1a	15d	27-Dec-14 08	11-Jan-15 18	163d										
From East (TS4)																
Outer Heading Excavation (2d/m, 24h/day work shift, 7d/week, no work on statutory holiday)																
A9730	WB, Outer Heading From East, CH 4105- 4092.5 = 12.5m @2d/m	7d/wk-1a	25d	30-Aug-14 08 A	30-Sep-14 18	168d										
Outer Bench Excavation (1.5d-2d/m, 20m separation with heading)																
A9740	WB, Outer Bench From East, CH 4136- 4135 = 1m	7d/wk-1a	2d	12-Oct-14 08	13-Oct-14 18	168d										
A9770	WB, Outer Bench From East, CH 4135- 4125 = 10m	7d/wk-1a	15d	14-Oct-14 08	28-Oct-14 18	168d										
A9745	WB, Outer Bench From East, CH 4125- 4115 = 10m	7d/wk-1a	15d	28-Oct-14 08	11-Nov-14 18	168d										
A9750	WB, Outer Bench From East, CH 4115- 4105 = 10m	7d/wk-1a	15d	11-Nov-14 08	25-Nov-14 18	168d										
A9755	WB, Outer Bench From East, CH 4105- 4095 = 10m	7d/wk-1a	15d	26-Nov-14 08	10-Dec-14 18	168d										
A9760	WB, Outer Bench From East, CH 4095- 4082.5 = 12.5m	7d/wk-1a	25d	11-Dec-14 08	06-Jan-15 18	168d										
WB (Inner Tunnel Excavation + Lining)																
From West (TPCWAE)																
Inner Heading Excavation (2-3d/m, 24h/day work shift, 7d/week, no work on statutory holiday)																
A9130	WB, Inner Heading From West, CH 3993- 4005 = 12m @3d/m	7d/wk-1a	50d	29-Sep-14 08	18-Nov-14 18	0d										
A9135	WB, Inner Heading From West, CH 4005- 4015 = 10m @2d/m	7d/wk-1a	20d	19-Nov-14 08	08-Dec-14 18	0d										
A9140	WB, Inner Heading From West, CH 4015- 4025 = 10m @2d/m	7d/wk-1a	20d	09-Dec-14 08	29-Dec-14 18	0d										

- Summary Bar
- ▬ Actual Level of Effort
- ▬ Actual Work
- ▬ Remaining Work
- ▬ Critical Remaining Work
- ◆ Milestone

13 of 18

China State Construction Engineering (Hong Kong) Ltd

Contract No. HY/2009/15 - Central Wan Chai By Pass - Tunnel (Causeway Bay Typhoon Shelter Section)

WORKS PROGRAMME REV. M

Prepared by William Caluza			
Date	Revision	Checked	Approved
26-Sep...	1st submission		



Activity ID	Activity Name	Calendar	Original Duration	Start	Finish	Total Float	2015				2016			
							Q4	Q1	Q2	Q3	Q4	Q1	Q2	Q3
A9100	WB,Inner Heading From West, CH 4025- 4035 = 10m @2d/m	7d/wk-1a	20d	30-Dec-14 08	19-Jan-15 18	0d		■	WB,Inner Heading From West, CH 4025- 4035 = 10m @2d/m					
A9105	WB,Inner Heading From West, CH 4035- 4045 = 10m @2d/m	7d/wk-1a	20d	20-Jan-15 08	08-Feb-15 18	0d		■	WB,Inner Heading From West, CH 4035- 4045 = 10m @2d/m					
A9110	WB,Inner Heading From West, CH 4045- 4055 = 10m @2d/m	7d/wk-1a	20d	09-Feb-15 08	03-Mar-15 18	0d		■	WB,Inner Heading From West, CH 4045- 4055 = 10m @2d/m					
A9115	WB,Inner Heading From West, CH 4055- 4065 = 10m @ 2d/m	7d/wk-1a	20d	04-Mar-15 08	23-Mar-15 18	0d		■	WB,Inner Heading From West, CH 4055- 4065 = 10m @ 2d/m					
A9120	WB,Inner Heading From West, CH 4065- 4075 = 10m, @ 2d/m	7d/wk-1a	20d	24-Mar-15 08	13-Apr-15 18	0d		■	WB,Inner Heading From West, CH 4065- 4075 = 10m, @ 2d/m					
A9125	WB,Inner Heading From West, CH 4075- 4085 = 10m @ 2d/m	7d/wk-1a	20d	14-Apr-15 08	04-May-15 18	0d		■	WB,Inner Heading From West, CH 4075- 4085 = 10m @ 2d/m					
Inner Bench Excavation (1.5d-2d/m, 20m separation with heading)														
A9180	WB,Inner Bench From West, CH 3993- 4005 = 12m	7d/wk-1a	18d	30-Dec-14 08	17-Jan-15 18	27d		■	WB,Inner Bench From West, CH 3993- 4005 = 12m					
A9205	WB,Inner Bench From West, CH 4005- 4015 = 10m	7d/wk-1a	15d	20-Jan-15 08	03-Feb-15 18	25d		■	WB,Inner Bench From West, CH 4005- 4015 = 10m					
A9190	WB,Inner Bench From West, CH 4015- 4025 = 10m	7d/wk-1a	15d	09-Feb-15 08	26-Feb-15 18	20d		■	WB,Inner Bench From West, CH 4015- 4025 = 10m					
A9185	WB,Inner Bench From West, CH 4025- 4035 = 10m	7d/wk-1a	15d	04-Mar-15 08	18-Mar-15 18	15d		■	WB,Inner Bench From West, CH 4025- 4035 = 10m					
A9155	WB,Inner Bench From West, CH 4035- 4045 = 10m	7d/wk-1a	15d	24-Mar-15 08	08-Apr-15 18	10d		■	WB,Inner Bench From West, CH 4035- 4045 = 10m					
A9160	WB,Inner Bench From West, CH 4045- 4055 = 10m	7d/wk-1a	15d	14-Apr-15 08	28-Apr-15 18	5d		■	WB,Inner Bench From West, CH 4045- 4055 = 10m					
A9165	WB,Inner Bench From West, CH 4055- 4065 = 10m	7d/wk-1a	15d	05-May-15 08	19-May-15 18	0d		■	WB,Inner Bench From West, CH 4055- 4065 = 10m					
A9170	WB,Inner Bench From West, CH 4065- 4075 = 10m	7d/wk-1a	15d	20-May-15 08	03-Jun-15 18	0d		■	WB,Inner Bench From West, CH 4065- 4075 = 10m					
A9175	WB,Inner Bench From West, CH 4075- 4085 = 10m	7d/wk-1a	15d	04-Jun-15 08	18-Jun-15 18	0d		■	WB,Inner Bench From West, CH 4075- 4085 = 10m					
From East (TS4)														
Inner Heading Excavation (2d/m, 24h/day work shift, 7d/week, no work on statutory holiday)														
A9210	WB,Inner Heading From East, CH 4135- 4125 = 10m @2d/m	7d/wk-1a	20d	14-Jan-15 08	02-Feb-15 18	6d		■	WB,Inner Heading From East, CH 4135- 4125 = 10m @2d/m					
A9215	WB,Inner Heading From East, CH 4125- 4115 = 10m @2d/m	7d/wk-1a	20d	03-Feb-15 08	25-Feb-15 18	6d		■	WB,Inner Heading From East, CH 4125- 4115 = 10m @2d/m					
A9230	WB,Inner Heading From East, CH 4115- 4105 = 10m @2d/m	7d/wk-1a	20d	26-Feb-15 08	17-Mar-15 18	6d		■	WB,Inner Heading From East, CH 4115- 4105 = 10m @2d/m					
A9232	WB,Inner Heading From East, CH 4105- 4095 = 10m @2d/m	7d/wk-1a	20d	18-Mar-15 08	07-Apr-15 18	6d		■	WB,Inner Heading From East, CH 4105- 4095 = 10m @2d/m					
A9225	WB,Inner Heading From East, CH 4095- 4085 = 10m @2d/m	7d/wk-1a	20d	08-Apr-15 08	27-Apr-15 18	6d		■	WB,Inner Heading From East, CH 4095- 4085 = 10m @2d/m					
Inner Bench Excavation (1.5d-2d/m, 20m separation with heading)														
A9235	WB,Inner Bench From East, CH 4135- 4125 = 10m	7d/wk-1a	15d	18-Mar-15 08	01-Apr-15 18	16d		■	WB,Inner Bench From East, CH 4135- 4125 = 10m					
A9240	WB,Inner Bench From East, CH 4125- 4115 = 10m	7d/wk-1a	15d	08-Apr-15 08	22-Apr-15 18	11d		■	WB,Inner Bench From East, CH 4125- 4115 = 10m					
A9245	WB,Inner Bench From East, CH 4115- 4105 = 10m	7d/wk-1a	15d	28-Apr-15 08	13-May-15 18	6d		■	WB,Inner Bench From East, CH 4115- 4105 = 10m					
A9247	WB,Inner Bench From East, CH 4105- 4095 = 10m	7d/wk-1a	15d	14-May-15 08	28-May-15 18	6d		■	WB,Inner Bench From East, CH 4105- 4095 = 10m					
A9250	WB,Inner Bench From East, CH 4095- 4085 = 10m	7d/wk-1a	15d	29-May-15 08	12-Jun-15 18	6d		■	WB,Inner Bench From East, CH 4095- 4085 = 10m					

- Summary Bar
- Actual Level of Effort
- Actual Work
- Remaining Work
- Critical Remaining Work
- ◆ Milestone

14 of 18

China State Construction Engineering (Hong Kong) Ltd

Contract No. HY/2009/15 - Central Wan Chai By Pass - Tunnel (Causeway Bay Typhoon Shelter Section)

WORKS PROGRAMME REV. M

Prepared by William Caluza

Date	Revision	Checked	Approved
26-Sep...	1st submission		



中國建築工程(香港)有限公司
CHINA STATE CONSTRUCTION ENGINEERING (HONG KONG) LTD.

Activity ID	Activity Name	Calendar	Original Duration	Start	Finish	Total Float	2015				2016						
							Q4	Q1	Q2	Q3	Q4	Q1	Q2	Q3			
Tunnel Lining Works																	
From West Base Slab (10m/bay, 10m separation with benching excavation)																	
A9295	WB From West, Base Slab CH 3990 - 3995 = 5m bay	7d/wk-1a	10d	18-Jan-15 08	27-Jan-15 18	37d											
A9320	WB From West, Base Slab CH 3995 - 4005 = 10m/bay	7d/wk-1a	10d	04-Feb-15 08	13-Feb-15 18	30d											
A9255	WB From West, Base Slab CH 4005 - 4015 = 10m/bay	7d/wk-1a	10d	27-Feb-15 08	08-Mar-15 18	50d											
A9280	WB From West, Base Slab CH 4015 - 4025 = 10m/bay	7d/wk-1a	10d	19-Mar-15 08	28-Mar-15 18	40d											
A9265	WB From West, Base Slab CH 4025 - 4035 = 10m/bay	7d/wk-1a	10d	09-Apr-15 08	18-Apr-15 18	30d											
A9300	WB From West, Base Slab CH 4035 - 4045 = 10m/bay	7d/wk-1a	10d	29-Apr-15 08	09-May-15 18	20d											
A9325	WB From West, Base Slab CH 4045 - 4055 = 10m/bay	7d/wk-1a	10d	20-May-15 08	29-May-15 18	10d											
A9305	WB From West, Base Slab CH 4055 - 4065 = 10m/bay	7d/wk-1a	10d	04-Jun-15 08	13-Jun-15 18	5d											
A9310	WB From West, Base Slab CH 4065 - 4075 = 10m/bay	7d/wk-1a	10d	19-Jun-15 08	29-Jun-15 18	0d											
A9315	WB From West, Base Slab CH 4075 - 4080 = 5m	7d/wk-1a	10d	30-Jun-15 08	10-Jul-15 18	0d											
From East Base Slab (10m/bay, 10m separation with benching excavation)																	
A9960	WB From East, Base Slab CH 4135 - 4125 = 10m/bay	7d/wk-1a	10d	23-Apr-15 08	03-May-15 18	26d											
A9955	WB From East, Base Slab CH 4125 - 4115 = 10m/bay	7d/wk-1a	10d	14-May-15 08	23-May-15 18	16d											
A9950	WB From East, Base Slab CH 4115 - 4105 = 10m/bay	7d/wk-1a	10d	29-May-15 08	07-Jun-15 18	11d											
A9945	WB From East, Base Slab CH 4105 - 4095 = 10m/bay	7d/wk-1a	10d	13-Jun-15 08	23-Jun-15 18	6d											
A9940	WB From East, Base Slab CH 4095 - 4085 = 10m/bay	7d/wk-1a	10d	24-Jun-15 08	04-Jul-15 18	6d											
A9941	WB From East, Base Slab CH 4085 - 4080 = 5m	7d/wk-1a	10d	05-Jul-15 08	14-Jul-15 18	6d											
Lining (5m/bay, 10m separation with base slab)																	
A9430	WB From West, Lining CH 3990 - 3995 = 1bay	7d/wk-1a	7d	14-Feb-15 08	23-Feb-15 18	30d											
A9470	WB From West, Lining CH 3995 - 4000 = 1bay	7d/wk-1a	7d	24-Feb-15 08	02-Mar-15 18	30d											
A9435	WB From West, Lining CH 4000 - 4005 = 1bay	7d/wk-1a	7d	03-Mar-15 08	09-Mar-15 18	30d											
A9360	WB From West, Lining CH 4005 - 4010 = 1bay	7d/wk-1a	7d	10-Mar-15 08	16-Mar-15 18	30d											
A9365	WB From West, Lining CH 4010 - 4015 = 1bay	7d/wk-1a	7d	17-Mar-15 08	23-Mar-15 18	30d											
A9370	WB From West, Lining CH 4015 - 4020 = 1bay	7d/wk-1a	7d	24-Mar-15 08	30-Mar-15 18	30d											
A9375	WB From West, Lining CH 4020 - 4025 = 1bay	7d/wk-1a	7d	31-Mar-15 08	07-Apr-15 18	30d											
A9380	WB From West, Lining CH 4025 - 4030 = 1bay	7d/wk-1a	7d	08-Apr-15 08	14-Apr-15 18	30d											
A9385	WB From West, Lining CH 4030 - 4035 = 1bay	7d/wk-1a	7d	15-Apr-15 08	21-Apr-15 18	30d											

- Summary Bar
- ▬ Actual Level of Effort
- ▬ Actual Work
- ▬ Remaining Work
- ▬ Critical Remaining Work
- ◆ Milestone

15 of 18

China State Construction Engineering (Hong Kong) Ltd

Contract No. HY/2009/15 - Central Wan Chai By Pass - Tunnel (Causeway Bay Typhoon Shelter Section)

WORKS PROGRAMME REV. M

Prepared by William Kaluza

Date	Revision	Checked	Approved
26-Sep...	1st submission		



中國建築工程(香港)有限公司
CHINA STATE CONSTRUCTION ENGINEERING (HONG KONG) LTD.

Activity ID	Activity Name	Calendar	Original Duration	Start	Finish	Total Float	2015				2016		
							Q4	Q1	Q2	Q3	Q4	Q1	Q2
A9390	WB From West, Lining CH 4035 - 4040 = 1bay	7d/wk-1a	7d	22-Apr-15 08	28-Apr-15 18	30d			■ WB From West, Lining CH 4035 - 4040 = 1bay				
A9330	WB From West, Lining CH 4040 - 4045 = 1bay	7d/wk-1a	7d	29-Apr-15 08	06-May-15 18	30d			■ WB From West, Lining CH 4040 - 4045 = 1bay				
A9335	WB From West, Lining CH 4045 - 4050 = 1bay	7d/wk-1a	7d	07-May-15 08	13-May-15 18	30d			■ WB From West, Lining CH 4045 - 4050 = 1bay				
A9340	WB From West, Lining CH 4050 - 4055 = 1bay	7d/wk-1a	7d	14-May-15 08	20-May-15 18	30d			■ WB From West, Lining CH 4050 - 4055 = 1bay				
A9345	WB From West, Lining CH 4055 - 4060 = 1bay	7d/wk-1a	7d	21-May-15 08	27-May-15 18	30d			■ WB From West, Lining CH 4055 - 4060 = 1bay				
A9350	WB From West, Lining CH 4060 - 4065 = 1bay	7d/wk-1a	7d	28-May-15 08	03-Jun-15 18	30d			■ WB From West, Lining CH 4060 - 4065 = 1bay				
A9355	WB From West, Lining CH 4065 - 4070 = 1bay	7d/wk-1a	5d	04-Jun-15 08	08-Jun-15 18	30d			■ WB From West, Lining CH 4065 - 4070 = 1bay				
A9415	WB From West, Lining CH 4070 - 4075 = 1bay	7d/wk-1a	5d	11-Jul-15 08	15-Jul-15 18	0d			■ WB From West, Lining CH 4070 - 4075 = 1bay				
A9475	WB From West, Lining CH 4075 - 4080 = 1bay	7d/wk-1a	5d	16-Jul-15 08	20-Jul-15 18	0d			■ WB From West, Lining CH 4075 - 4080 = 1bay				
A9440	WB From West, Lining CH 4080 - 4085 = 1bay	7d/wk-1a	5d	21-Jul-15 08	25-Jul-15 18	0d			■ WB From West, Lining CH 4080 - 4085 = 1bay				
A9445	WB From West, Lining CH 4085 - 4090 = 1bay	7d/wk-1a	5d	26-Jul-15 08	30-Jul-15 18	0d			■ WB From West, Lining CH 4085 - 4090 = 1bay				
A9450	WB From West, Lining CH 4090 - 4095 = 1bay	7d/wk-1a	5d	31-Jul-15 08	04-Aug-15 18	0d			■ WB From West, Lining CH 4090 - 4095 = 1bay				
A9455	WB From West, Lining CH 4095 - 4100 = 1bay	7d/wk-1a	5d	05-Aug-15 08	09-Aug-15 18	0d			■ WB From West, Lining CH 4095 - 4100 = 1bay				
A9420	WB From West, Lining CH 4100 - 4105 = 1bay	7d/wk-1a	5d	10-Aug-15 08	14-Aug-15 18	0d			■ WB From West, Lining CH 4100 - 4105 = 1bay				
A9425	WB From West, Lining CH 4105 - 4110 = 1bay	7d/wk-1a	5d	15-Aug-15 08	19-Aug-15 18	0d			■ WB From West, Lining CH 4105 - 4110 = 1bay				
A9460	WB From West, Lining CH 4110 - 4115 = 1bay	7d/wk-1a	5d	20-Aug-15 08	24-Aug-15 18	0d			■ WB From West, Lining CH 4110 - 4115 = 1bay				
A9465	WB From West, Lining CH 4115 - 4120 = 1bay	7d/wk-1a	5d	25-Aug-15 08	29-Aug-15 18	0d			■ WB From West, Lining CH 4115 - 4120 = 1bay				
A9395	WB From West, Lining CH 4120 - 4125 = 1bay	7d/wk-1a	5d	30-Aug-15 08	03-Sep-15 18	0d			■ WB From West, Lining CH 4120 - 4125 = 1bay				
A9400	WB From West, Lining CH 4125 - 4130 = 1bay	7d/wk-1a	5d	04-Sep-15 08	08-Sep-15 18	0d			■ WB From West, Lining CH 4125 - 4130 = 1bay				
A9405	WB From West, Lining CH 4130 - 4135 = 1bay	7d/wk-1a	5d	09-Sep-15 08	13-Sep-15 18	0d			■ WB From West, Lining CH 4130 - 4135 = 1bay				
A9410	WB From West, Lining CH 4135 - 4136.5 = 1bay	7d/wk-1a	5d	14-Sep-15 08	18-Sep-15 18	0d			■ WB From West, Lining CH 4135 - 4136.5 = 1bay				
OHVD(10m/bay) / Utility Trough													
A9480	WB From West OHVD and utility trough =, 153= 16 bays @ 10m/bay @ 7d/bay	7d/wk-1a	115d	08-Jul-15 08	02-Nov-15 18	0d			■ WB From West OHVD and utility trough =, 153= 16 bays @ 10				
Completion of KD10- Section 5													
A8445	KD10- Section 2: Completion of Mined Tunnel Works (orig. Target KD10- 2 Nov 2015)	7d/wk-2	0d		02-Nov-15 18*	0d							◆ KD10- Section 2: Completion of Mined Tunnel Works (orig. Tar
Interface works with other Contracts													
S5_60115	Handover TZ6 to MTR	7d/wk-2	0d		30-Sep-14 18	-249d			◆ Handover TZ6 to MTR				
S6_5283	Handover TZ4 to CWB(T2)	7d/wk-2	0d		10-Nov-14 18	-290d			◆ Handover TZ4 to CWB(T2)				
S6_5275	Provide access to CWB (CC) Contractor- TS1 & TS2	7d/wk-2	0d		21-Nov-14 18*	-85d			◆ Provide access to CWB (CC) Contractor- TS1 & TS2				

Summary Bar
 Actual Level of Effort
 Actual Work
 Remaining Work
 Critical Remaining Work
 Milestone

16 of 18

China State Construction Engineering (Hong Kong) Ltd

Contract No. HY/2009/15 - Central Wan Chai By Pass - Tunnel (Causeway Bay Typhoon Shelter Section)

WORKS PROGRAMME REV. M

Prepared by William Caluza			
Date	Revision	Checked	Approved
26-Sep...	1st submission		



Activity ID	Activity Name	Calendar	Original Duration	Start	Finish	Total Float	2015				2016			
							Q4	Q1	Q2	Q3	Q4	Q1	Q2	Q3
SB_5280	Provide access to CWB (CC) Contractor- TS4, TPCWA, Mined Tunnel	7d/wk-2	0d		31-Mar-16 18*	-124d								◆ Provide access to CWB (CC) C
Stage and Section Completion														
KD_5735	KD8 - Completion of Section 3, (1326d)	7d/wk-2	0d		30-Sep-14 18*	-86d	◆ KD8 - Completion of Section 3, (1326d)							
KD_5720	KD5 - Achievement of Stage 5, (1152d)	7d/wk-2	0d		16-Oct-14 18*	-323d	◆ KD5 - Achievement of Stage 5, (1152d)							
KD_5760	KD13 - Completion of Section 7B, (1152d)	7d/wk-2	0d		17-Nov-14 18*	-353d	◆ KD13 - Completion of Section 7B, (1152d)							
KD_5730	KD7 - Completion of Section 2, (1152d)	7d/wk-2	0d		17-Nov-14 18*	-297d	◆ KD7 - Completion of Section 2, (1152d)							
KD_5740	KD9 - Completion of Section 4, (1739d)	7d/wk-2	0d		10-Nov-15 18*	-132d							◆ KD9 - Completion of Section 4, (1739d)	
KD_5745	KD10 - Completion of Section 5, (1863d)	7d/wk-2	0d		25-Mar-16 18	-144d							◆ KD10 - Completion of Section 5, (
KD_5750	KD11 - Completion of Section 6, (1949d)	7d/wk-2	0d		23-May-16 18*	-121d							◆ KD11 - Completion of	
Portion Handover Date														
CD_5685	Portion Handover - Portion IV(4), KD8 +28	7d/wk-2	0d		28-Oct-14 18*	-50d	◆ Portion Handover - Portion IV(4), KD8 +28							
CD_5680	Portion Handover - Portion V (5), KD8 +28	7d/wk-2	0d		28-Oct-14 18*	-50d	◆ Portion Handover - Portion V (5), KD8 +28							
CD_5695	Portion Handover - Portion VI (6), KD8 +28	7d/wk-2	0d		28-Oct-14 18*	-50d	◆ Portion Handover - Portion VI (6), KD8 +28							
CD_5735	Portion Handover - Portion XIII (13B), KD8 +28	7d/wk-2	0d		28-Oct-14 18*	-50d	◆ Portion Handover - Portion XIII (13B), KD8 +28							
CD_5790	Portion Handover - Portion XXII (22), KD8 +28	7d/wk-2	0d		28-Oct-14 18*	-50d	◆ Portion Handover - Portion XXII (22), KD8 +28							
CD_5670	Portion Handover - Portion III (3), KD8 +28	7d/wk-2	0d		28-Oct-14 18*	-50d	◆ Portion Handover - Portion III (3), KD8 +28							
CD_5720	Portion Handover - Portion XIII (13A), KD7 +28	7d/wk-2	0d		15-Dec-14 18*	-79d	◆ Portion Handover - Portion XIII (13A), KD7 +28							
CD_5705	Portion Handover - Portion VIII (8), KD7 +28	7d/wk-2	0d		15-Dec-14 18*	-79d	◆ Portion Handover - Portion VIII (8), KD7 +28							
CD_5730	Portion Handover - Portion XIV (14A), KD7 +28	7d/wk-2	0d		15-Dec-14 18*	-79d	◆ Portion Handover - Portion XIV (14A), KD7 +28							
CD_5740	Portion Handover - Portion XV (15), KD7 +28	7d/wk-2	0d		15-Dec-14 18*	-79d	◆ Portion Handover - Portion XV (15), KD7 +28							
CD_5805	Portion Handover - Portion XXIII (23), KD7 +28	7d/wk-2	0d		15-Dec-14 18*	-79d	◆ Portion Handover - Portion XXIII (23), KD7 +28							
CD_5775	Portion Handover - Portion XVIII (18), KD10 +28	7d/wk-2	0d		30-Nov-15 18*	0d							◆ Portion Handover - Portion XVIII (18), KD10 +28	
CD_5710	Portion Handover - Portion XI (11), KD9 +28	7d/wk-2	0d		27-Dec-15 18*	0d							◆ Portion Handover - Portion XI (11), KD9 +28	
CD_5700	Portion Handover - Portion IX (9), KD10 +28	7d/wk-2	0d		22-Apr-16 18*	-52d							◆ Portion Handover - Portion	
CD_5745	Portion Handover - Portion XIV (14B), KD10 +28	7d/wk-2	0d		22-Apr-16 18*	-52d							◆ Portion Handover - Portion	
CD_5755	Portion Handover - Portion XVI (16), KD10 +28	7d/wk-2	0d		22-Apr-16 18*	-52d							◆ Portion Handover - Portion	
CD_5750	Portion Handover - Portion XVII (17), KD10 +28	7d/wk-2	0d		22-Apr-16 18*	-52d							◆ Portion Handover - Portion	
CD_5760	Portion Handover - Portion XIX (19), KD10 +28	7d/wk-2	0d		22-Apr-16 18*	-52d							◆ Portion Handover - Portion	
CD_5780	Portion Handover - Portion XX (20B), KD10 +28	7d/wk-2	0d		22-Apr-16 18*	-52d							◆ Portion Handover - Portion	

- █ Summary Bar
- ▬ Actual Level of Effort
- █ Actual Work
- █ Remaining Work
- █ Critical Remaining Work
- ◆ Milestone

17 of 18

China State Construction Engineering (Hong Kong) Ltd

Contract No. HY/2009/15 - Central Wan Chai By Pass - Tunnel (Causeway Bay Typhoon Shelter Section)

WORKS PROGRAMME REV. M

Prepared by William Caluza

Date	Revision	Checked	Approved
26-Sep...	1st submission		



中國建築工程(香港)有限公司
CHINA STATE CONSTRUCTION ENGINEERING (HONG KONG) LTD.

Activity ID	Activity Name	Calendar	Original Duration	Start	Finish	Total Float	2015				2016			
							Q4	Q1	Q2	Q3	Q4	Q1	Q2	Q3
CD_5690	Portion Handover - Portion VII (7), KD11 +28	7d/wk-2	0d		20-Jun-16 18	0d								◆ Portion Handov
CD_5725	Portion Handover - Portion XII (12), KD11 +28	7d/wk-2	0d		20-Jun-16 18	0d								◆ Portion Handov
CD_5715	Portion Handover - Portion X (10), KD11 +28	7d/wk-2	0d		20-Jun-16 18	0d								◆ Portion Handov
CD_5785	Portion Handover - Portion XXA (20A), KD11 +28	7d/wk-2	0d		20-Jun-16 18	0d								◆ Portion Handov
CD_5795	Portion Handover - Portion XXI (21), KD11 +28	7d/wk-2	0d		20-Jun-16 18	0d								◆ Portion Handov

- Summary Bar
- Actual Level of Effort
- Actual Work
- Remaining Work
- Critical Remaining Work
- ◆ ◆ Milestone

18 of 18

China State Construction Engineering (Hong Kong) Ltd
 Contract No. HY/2009/15 - Central Wan Chai By Pass - Tunnel (Causeway Bay Typhoon Shelter Section)
WORKS PROGRAMME REV. M

Prepared by William Caluza			
Date	Revision	Checked	Approved
26-Sep...	1st submission		



CEDD Contract No. HK/2012/08
Wan Chai Development Phase II
Central -Wan Chai Bypass at Wan Chai West

Activity ID	Activity Name	Early Start	Early Finish	Remaining Duration	Activity % Complete	2015			
						Mar	Apr	May	Jun
HK/2012/08 Revised Works Programme Rev.4 (Revised as of 28-Feb-15)									
Dredging and Reclamation									
Marine Work Construction									
Zone A2									
Seawall Construction - Zone A2									
MAR10775	Zone A2 - seawall - Type 4, 13 - lay toe block and leveling stone in line with backfilling in zone A2(2)	19-May-15*	02-Jun-15	15	0%				
Zone D									
Seawall Construction - Zone D									
Seawall 2C-L									
MAR12263	Zone D - TTA for demolish existing seawall	28-Feb-15	19-Mar-15	17	0%				
MAR12264	Zone D - Preparation Works & demolish existing seawall	20-Mar-15	02-Sep-15	135	0%				
Works for Section Completion									
Construction									
Section II - MVB Structure									
MVB Substructure - Diaphragm Wall for Portion A&B									
MVB A&B - Pumping Test Preparation/ Pumping Test									
SII10580	Sec II - MVB A&B - pumping test	20-Mar-15*	31-Mar-15	12	0%				
MVB Substructure - ELS & Structural Works for Portion A									
MVB Substructure - ELS for Portion A									
SII10840	Sec II - MVB A - Install Strut L1 at +2.7mPD	10-Feb-15 A	04-Mar-15	4	55.56%				
SII10860	Sec II - MVB A - Excavation down to -1.5mPD	28-Feb-15 A	25-Mar-15	22	0%				
SII10880	Sec II - MVB A - Install Strut L2 at -1.0mPD	05-Mar-15	31-Mar-15	23	0%				
SII10900	Sec II - MVB A - Excavation down to -6.5mPD	25-Mar-15	21-Apr-15	20	0%				
SII10920	Sec II - MVB A - Install Strut L3 at -5.5mPD	01-Apr-15	27-Apr-15	19	0%				
SII10940	Sec II - MVB A - Excavation down to -10.5mPD	22-Apr-15	11-May-15	16	0%				
SII10960	Sec II - MVB A - Install Strut L4 at -9.5mPD	28-Apr-15	23-May-15	22	0%				
SII10980	Sec II - MVB A - Excavation down to -14mPD	14-May-15	30-May-15	14	0%				
SII11000	Sec II - MVB A - Install Strut L5 at -13mPD	19-May-15	12-Jun-15	21	0%				
MVB Substructure - ELS & Structural Works for Portion B									
MVB Substructure - ELS for Portion B									
SII11460	Sec II - MVB B: Install Strut L1 at +2.7mPD	12-Feb-15 A	04-Mar-15	4	55.56%				
SII11480	Sec II - MVB B: Excavation down to -1.0mPD	28-Feb-15 A	25-Mar-15	22	0%				
SII11500	Sec II - MVB B: Install Strut L2 at 0.0mPD	05-Mar-15	31-Mar-15	23	0%				
SII11520	Sec II - MVB B: Excavation down to -5.5mPD	25-Mar-15	21-Apr-15	20	0%				
SII11540	Sec II - MVB B: Install Strut L3 at -4.5mPD	01-Apr-15	27-Apr-15	19	0%				
SII11560	Sec II - MVB B: Excavation down to -9.5mPD	22-Apr-15	11-May-15	16	0%				
SII11580	Sec II - MVB B: Install Strut L4 at -8.5mPD	28-Apr-15	23-May-15	22	0%				
SII11600	Sec II - MVB B: Excavation down to -12.5mPD	14-May-15	30-May-15	14	0%				
SII11620	Sec II - MVB B: Install Strut L5 at -11.5mPD	19-May-15	12-Jun-15	21	0%				
MVB Substructure - Piling Works									
MVB C - Preboed H Piles									
SII10380	Sec II - MVB C - predrilling for preboed H-piles	02-May-15	30-May-15	24	0%				
MVB Substructure - Diaphragm Wall for Portion C									
MVB C - Dwall									
SII10620	Sec II - MVB C - Construct Guide Wall [P42-P43]	10-Mar-15	16-Mar-15	6	0%				
SII10622	Sec II - MVB C - construct Dwall [P42-P43] (1.5m thk on rock)	17-Mar-15	30-Apr-15	35	0%				

- █ Actual Work
- █ Remaining Work
- █ Critical Remain...
- ◆ Milestone

Project Star :22-Jan-13
Project End: 21-Jul-18
Date Date: 28-Feb-15

3 Months Rolling Programme (Non-CRIII Area)
March 2015 to May 2015

Date	Revision	Checked	Approved
01-Mar-15	1		

CEDD Contract No. HK/2012/08
Wan Chai Development Phase II
Central -Wan Chai Bypass at Wan Chai West

Activity ID	Activity Name	Early Start	Early Finish	Remaining Duration	Activity % Complete	2015				
						Mar	Apr	May	Jun	
Section II A - CWB Tunnel & Slip Road Structures and Facilities										
Section II A - CWB Tunnel - Design, Submission and Approval										
CWB Tunnel Temp Work Design for Structure										
SIIA10540	CWB Tunnel - Temp work design for tunnel structural works - prepare & submit to ICE	28-Feb-15	13-Apr-15	45	0%					
SIIA10560	CWB Tunnel - Temp work design for tunnel structural works - ICE check & issue check cert	14-Apr-15	09-May-15	26	0%					
SIIA10580	CWB Tunnel - Temp work design for tunnel structural works - Eng comment & approve	10-May-15	04-Jun-15	26	0%					
CWB CRIII & A1										
CWB CRIII & A1 - Dwall and Pile Construction										
SIIA10710	Sec II A - CWB CRIII - Construct pre-bored H-pile	22-Nov-14 A	07-Apr-15	32	5.88%					
SIIA10730	Sec II A - CWB CRIII - Loading Test	08-Apr-15	02-May-15	18	0%					
SIIA11140	Sec II A - CWB A1 - Construct pre-bored H-pile	31-Oct-14 A	31-Mar-15	27	53.45%					
CWB CRIII & A1 - Pumping Test Preparation/ Pumping Test										
CWB CRIII - Pumping Test Preparation										
SIIA10720	Sec II A - CWB CRIII - D-wall grout curtain / contact grout / fissure grout	01-Feb-15 A	30-Apr-15	49	0%					
SIIA10740	Sec II A - CWB CRIII - D-wall Sonic test / interface core	01-Feb-15 A	30-Apr-15	49	0%					
SIIA10760	Sec II A - CWB CRIII - install dewater/ recharge / observation well	02-May-15	26-May-15	20	0%					
CWB A1 - Pumping Testing Preparation										
SIIA11165	SIIA - CWB A1 - install shear pins to existing bored piles	16-Apr-15	16-May-15	26	0%					
SIIA11220	Sec II A - CWB A1 - D-wall Sonic test	28-Feb-15	15-Apr-15	36	0%					
SIIA11240	Sec II A - CWB A1 - install dewater/ recharge / observation well	27-May-15	18-Jun-15	20	0%					
CWB CRIII - ELS & Tunnel Structure										
CWB CRIII - ELS										
SIIA10820	Sec II A - CWB CRIII: Shoring & Excavation	20-Apr-15	31-Jul-15	85	0%					
CWB A1 - ELS & Tunnel Structure										
CWB A1 - ELS (Top-down Method) Roof										
SIIA11280	Sec II A - CWB A1: Shoring & Excavation (for Roof Slab)	24-Feb-15 A	14-Apr-15	35	12.5%					
CWB A1 - Tunnel Structure (Top down Method) Roof										
SIIA11300	Sec II A - CWB A1: Roof slab (1st Stage)	14-Apr-15	07-May-15	20	0%					
SIIA11440	Sec II A - CWB A1 : Roof slab (2nd Stage)	17-Apr-15	11-May-15	20	0%					
SIIA13040	Sec II A - CWB A1: waterproofing and backfill before Culvert L construction	12-May-15	26-May-15	12	0%					
CWB A1 - ELS Remaining										
SIIA11286	Sec II A - CWB A1 : Shoring & Excavation (Remaining)	27-May-15	31-Jul-15	55	0%					
CWB A1 - Other Works										
SIIA15480	Culvert L - [Summary] Bay 9 to Bay 11 on top of CWB A1 and divert flow	26-May-15	24-Jun-15	25	0%					
CWB B (& A2(1))										
CWB B - Dwall & Piling										
SIIA11520	Sec II A - CWB B (& A2(1)) : Construct Permanent DWall and barrette (1.2m thk on rock)	30-Oct-14 A	30-Apr-15	49	47.31%					
SIIA11525	Sec II A - CWB B (& A2(1)) : Construct temp Dwall (1.2m thk)	05-Nov-14 A	30-Apr-15	49	18.33%					
SIIA11540	Sec II A - CWB B (& A2(1)) : Construct pre-bored H-pile	20-Apr-15	14-Jul-15	70	0%					
SIIA11560	Sec II A - CWB B: Ground treatment to Stop End (MTR CWL)	16-May-15	30-Jul-15	62	0%					
CWB B - Pumping Test Preparation										
SIIA11580	Sec II A - CWB B: Dwall sonic test / interface core	25-Apr-15	08-Jul-15	60	0%					
SIIA11600	Sec II A - CWB B: Dwall precaution grout / fissure grout / grout curtain	25-Apr-15	08-Jul-15	60	0%					
CWB C (W)										
CWB C(W) - Dwall Construction										
SIIA11940	Sec II A - CWB CW: construct barrette	29-Dec-14 A	30-Apr-15	49	51%					
SIIA11945	Sec II A - CWB CW: construct Permanent DWall (1.5m thk) (on rock)	19-Jan-15 A	30-Apr-15	49	42.35%					
SIIA11960	Sec II A - CWB CW: Ground treatment to Stop End (MTR TWL)	16-May-15	30-Jul-15	62	0%					
SIIA11980	Sec II A - CWB CW: D-wall contact grout / fissure grout	27-Apr-15	27-Jul-15	75	0%					
SIIA12000	Sec II A - CWB CW: Dwall sonic test / interface core	27-Apr-15	27-Jul-15	75	0%					
CWB C (E)										

CEDD Contract No. HK/2012/08
Wan Chai Development Phase II
Central -Wan Chai Bypass at Wan Chai West

Activity ID	Activity Name	Early Start	Early Finish	Remaining Duration	Activity % Complete	2015			
						Mar	Apr	May	Jun
CWB C(E) & Enabling Work - Dwall Construction									
CWB C(E) - Dwall Construction									
SIIA12960	Sec II A - CWB CE: Predrilling for Dwall	18-Sep-14 A	14-May-15	60	33.33%				
SIIA12980	Sec II A - CWB CE: ground pre-treatment	30-Mar-15	19-Jun-15	65	0%				
SIIA13000	Sec II A - CWB CE: construct Guide Wall	04-Apr-15	02-Jun-15	45	0%				
SIIA13010	Sec II A - CWB CE: construct barrette (1.2m thk)	14-Apr-15	29-Sep-15	140	0%				
SIIA13020	Sec II A - CWB CE: construct Dwall (1.5m thk) (on rock)	14-Apr-15	19-Oct-15	156	0%				
SCL Enabling Work - Dwall Construction									
SIIA15520	Sec II - SCL Enabling Works - construct Dwall - Remaining [7 panels]	04-May-15	19-Oct-15	140	0%				
CWB D - Slip Road 1									
CWB D - Slip Road 1 - Dwall Construction & Piling									
SIIA12240	Sec II A - CWB SR1: Predrilling for Dwall & piles	15-Jan-15 A	27-May-15	70	22.22%				
SIIA12260	Sec II A - CWB SR1: ground pre-treatment	17-Jan-15 A	19-Jun-15	90	25%				
SIIA12280	Sec II A - CWB SR1: Guide Wall	10-Feb-15 A	03-Jul-15	100	0%				
SIIA12305	Sec II A - CWB SR1: construct Permanent DWall (1.2m thk)	03-Apr-15	31-Jul-15	95	0%				
Section III - Road D11 & Part of Road P2, Area 4, Implement 1st Stage ITA									
Roadwork & Utilities									
General									
SIII10040	Sec III - roadwork & utilities - storm water drain & subsoil drain	28-Mar-15	22-Sep-15	145	0%				
SIII10060	Sec III - roadwork & utilities - Watermain & Irrigation Mains	23-Apr-15	02-Sep-15	110	0%				
SIII10080	Sec III - roadwork & utilities - gas main and valve chamber	16-May-15	24-Sep-15	110	0%				
Section VI A - Box Culvert La, L1 & FRP-L Construction									
Sec VI C - Box Culvert La bay 4 (North)									
CUL11645	Sec VI C - Culvert L - bay 4 (north half) - drive pipe pile	28-Feb-15	14-Apr-15	35	0%				
CUL11650	Sec VI C - Culvert L - bay 4 (north half) - demolish existing seawall	27-May-15	16-Jun-15	18	0%				
Box Culvert L1 & FRP-L Construction (Bay 5 - Bay 7)									
Box Culvert L1 & FRP-L - Bay 5 to 7 Piling									
CUL10800	Sec VI C - Culvert L - bay 7 (PC5 & PC6) - construct pre-bored H-pile	10-Mar-15*	29-Apr-15	40	0%				
CUL10820	Sec VI C - Culvert L - bay 6 (PC3 & PC4) - construct pre-bored H-pile	10-Feb-15 A	14-May-15	60	0%				
CUL10840	Sec VI C - Culvert L - bay 5 (PC1 & PC2) - construct pre-bored H-pile	10-Feb-15 A	25-Apr-15	45	0%				
CUL10940	Sec VI C - Culvert L - bay 5 (PC1 & PC2) - pile head treatment	14-Apr-15	13-May-15	30	0%				
CUL11020	Sec VI C - Culvert L - bay 6 (PC3 & PC4) - pile head treatment	14-May-15	28-May-15	15	0%				
CUL11025	Sec VI C - Culvert L - bay 7 (PC5 & PC6) - pile head treatment	29-May-15	12-Jun-15	15	0%				
Box Culvert L1 & FRP-L - Bay 5 to 7 Structure									
Box Culvert L1 & FRP-L - Precast Unit Fabrication (Pile Cap)									
CUL10866	Sec VI C - Culvert L - bay 5-7 - PC1 to PC5 Construct precast Pile Cap	29-Apr-15	18-Jun-15	42	0%				
Box Culvert L1 & FRP-L - Precast Unit Fabrication (Box Structure)									
CUL10868	Sec VI C - Culvert L - bay 5-7 - Form Dry Dock for precast culvert units	15-Aug-14 A	07-Apr-15	32	56.76%				
CUL10870	Sec VI C - Culvert L - bay 5, 6 & 7 - Construct precast culvert units with Bulkhead	08-Apr-15	30-Jun-15	66	0%				
CUL10872	Sec VI C - Culvert L - bay 4b - Construct precast culvert units with Bulkhead	28-May-15	30-Jun-15	28	0%				
Box Culvert L1 & FRP-L - Precast Unit Installation									
CUL10864	Sec VI C - Culvert L - bay 5-7 - Demolition of Piling Platform	21-May-15	13-Jun-15	20	0%				
Box Culvert L1 & FRP-L - Bay 8									
Box Culvert L1 & FRP-L - Bay 9 Piling									
CUL10180	Culvert L - bay 8 - construct pre-bored H-pile	02-Apr-15	05-May-15	24	0%				
Box Culvert L1 & FRP-L - Bay 8 Temp Work & ELS									
CUL10190	Culvert L - Bay 8 - install sheetpile	06-May-15	21-May-15	14	0%				
CUL10200	Culvert L - bay 8 - ELS and bulk excavation & Dwall Break Through ready for Flow Diversion	22-May-15	30-May-15	7	0%				
Box Culvert L1 & FRP-L - Bay 9 to 11									
Box Culvert L1 & FRP-L - Bay 9 to 11 General									

CEDD Contract No. HK/2012/08
Wan Chai Development Phase II
Central -Wan Chai Bypass at Wan Chai West

Activity ID	Activity Name	Early Start	Early Finish	Remaining Duration	Activity % Complete	2015			
						Mar	Apr	May	Jun
CUL11690	CWB A1 - [Summary] Tunnel waterproofing and backfill for Culvert L construction	24-Feb-15 A	26-May-15	69	32.35%				
CUL11695	Culvert L - [Summary of Cul L bay 9 to 11] - construct in-situ box culverts	26-May-15	22-Jun-15	23	0%				
Box Culvert L1 & FRP-L - Bay 9									
CUL11700	Culvert L - bay 9 - construct base slab	26-May-15	30-May-15	5	0%				
Box Culvert L1 & FRP-L - Bay 10									
CUL11820	Culvert L - bay 10 - construct base slab	30-May-15	04-Jun-15	5	0%				
Box Culvert L1 & FRP-L - Bay 11									
CUL11880	Culvert L - bay 11 - construct base slab	28-May-15	02-Jun-15	5	0%				
Box Culvert L1 & FRP-L - Bay 12 to 13									
Box Culvert L1 & FRP-L - Bay 12 to 13 Piling									
CUL12354	Culvert L - bay 12 - construct pre-bored H-pile (PC9)	18-Apr-15	05-May-15	14	0%				
CUL12356	Culvert L - bay 13 - construct pre-bored H-pile (PC10 & PC11)	06-May-15	01-Jun-15	22	0%				
Box Culvert L1 & FRP-L - Bay 12 to 13 Temp Work & ELS									
CUL12365	Culvert L - Bay 12 - install sheetpile	06-May-15	21-May-15	14	0%				
CUL12385	Culvert L - bay 12 - ELS and bulk excavation	22-May-15	30-May-15	7	0%				
Section VI C - Area 3, 6, 8A & 8C									
Area 8A & 8C - Seawall Modification									
Modification of Seawall									
Modification of Seawall - Zone 1									
PRS10000	Sec VIC - Erection of Piling Platform	12-Mar-15*	04-Apr-15	21	0%				
PRS10020	Sec VIC - Piling Rig Mobilisation & Set up	07-Apr-15	17-Apr-15	7	0%				
PRS10040	Sec VIC - Pipe Pile (1st Stage - Approx. 5 nos.) With Grouting	18-Apr-15	08-May-15	17	0%				
Modification of Seawall - Zone 2 & 4									
PRS10120	Sec VIC - Piling Rig Mobilisation & Set Up (Zone 2)	09-May-15	16-May-15	7	0%				
PRS10140	Sec VIC - Pipe Pile (28 nos.) With Grouting (Zone 2)	18-May-15	29-Jul-15	60	0%				
Modification of Seawall - Zone 3									
PRS10200	Sec VIC - Removal of Platform of Bored Pile	09-May-15	16-May-15	7	0%				
PRS10220	Sec VIC - Excavation of Fluid & Rockfill	18-May-15	08-Jun-15	18	0%				
Area 6 - Box Culvert bay 5-6									
SVIC10000	Sec VI C - [Summary] Construct Box Culvert Bay 5-6	08-Apr-15	03-Aug-15	94	0%				
Area 3 - Box Culvert bay 4 and Roadwork									
SVIC10220	Sec VI C - [Summary] Construct Box Culvert Bay 4 in Area 3	01-Jan-15 A	13-Aug-15	135	0%				
Section VII - Remainder Works									
Tenders for Sub-contract and Material Procurement									
PCU70010	Sec VII - Prepare Sub-contract for removing interim landing steps	28-Mar-15	11-May-15	45	0%				
Landing Steps Construction									
SVII11180	Sec VII - Landing Steps - form temporary access from landing steps to Fleet Acade	09-May-15	01-Jun-15	18	0%				
Section VIII - Landscape Softworks									
Soft Landscaping Works									
SVIII10020	Sec VIII - Tree Felling/Transplanting at Portion 2 & 2A	20-Nov-13 A	06-Jun-15	79	12.22%				
Section X - Protection & Preservation of Trees									
Soft Landscaping Works									
SX10020	Sec X - Protection & Preservation of Trees	31-Jan-13 A	21-Jul-17	875	46.38%				

Activity ID	Activity Name	OD	Start	Finish	Calendar	2015					
						Apr 64	May 65	Jun 66	Jul 67	Aug 68	
Wan Chai Development Phase II - Central - Wan Chai Bypass at Wan Chai East (dd 9-Apr-15)											
Programme Milestones (Revised up to EOTO No.10 Issued on 29-Nov-13)											
Contractual Completion Dates											
Soft Landscaping & Establishment Key Dates											
KDC0140	Section 8C Works (1473 days) - Landscape Softworks in Area 8 (10-Feb-14)	0		20-Apr-15*	Calendar Day						
KDC0150	Section 8D Works (1838 days) - Establishment Works in Area 8 (10-Feb-15)	0		20-Apr-15*	Calendar Day						
Forecast Completion Dates											
KDF0110	Section 7 Works (831 days) - Box Culvert N1 & Works at Area 7	0	04-May-15	04-May-15	Calendar Day						
Possession of Site											
PS0090	Possession of Portion 9 - Western Bulkhead (By HK/2009/01)	0	07-May-15*	07-May-15	Calendar Day						
Preliminaries											
Interface with Others											
PRE0950	Permanent Diversion of Box Culvert M by HK/2009/01	0	20-Apr-15	20-Apr-15*	Calendar Day						
Critical Submission & Approval											
PRE-SUB-1000B	Temp Covered Walkway Capping Beam - Design Approval by AECOM	30	19-Jun-13 A	27-Apr-15	Calendar Day						
PRE-SUB-1010B	Temp Covered Walkway Cover System (PS30.5) - Design Approval by AECOM	30	12-Jun-14 A	27-Apr-15	Calendar Day						
CSD for CWB Tunnel											
PRE-CSD-2030B	Tunnel Portion 2 - Redesigned CWB Tunnel Structure Design Submission Approval by AECO	60	16-Nov-13 A	20-May-15	Calendar Day						
PRE-CSD-3000B	Tunnel Portion 3&4 - Redesigned Temp D-Wall Submission Approval by AECOM & GEO	30	08-Jun-13 A	30-Apr-15	Calendar Day						
PRE-CSD-3010B	Tunnel Portion 3&4 - ELS Submission Approval by AECOM & GEO	60	17-Jan-14 A	20-May-15	Calendar Day						
PRE-CSD-5000B	Tunnel Portion 5 - Temp D-Wall Submission Approval by AECOM & GEO	60	15-Aug-13 A	20-May-15	Calendar Day						
PRE-CSD-5010B	Tunnel Portion 5 - ELS Submission Approval by AECOM & GEO	60	09-Apr-15 A	19-Jun-15	Calendar Day						
PRE-CSD-6010B	Tunnel Portion 6 - ELS Submission Approval by AECOM & GEO	60	09-Apr-15 A	19-Jun-15	Calendar Day						
Critical Procurement & Site Delivery											
PRE-PRO-1100B	GRP Roof Panel for Temp Covered Walkway (Type 2)	60	15-Jun-14 A	11-May-15	Calendar Day						
Section 3 of the Works - Re-provisioning of Government Helipad and Public Toilet											
Outstanding Works											
S3-0070-1499	Reinstatement of armour rock, retaining walls & new covered walkway along Expo Drive East	254	11-Aug-12 A	20-May-15	HK Working						
Section 7 of the Works - Box Culvert N1 & Flood Relief System											
Transformer Building for Dining Services at Ferry Pier (VO116)											
ABWF Works											
S7-TB-3100	Landscaping Works	30	21-Apr-15	20-May-15	Calendar Day						
E&M Works											
S7-TB-4100	22kV Cable across HHR to Transformer Building by HEC	45	29-Oct-14 A	22-Apr-15	Calendar Day						
S7-TB-4300	Transformer Installation by HEC	30	10-Apr-15 A	30-Apr-15	Calendar Day						
S7-TB-4400	Energization of Transformer	7	01-May-15	07-May-15	Calendar Day						
Overall Testing & Commissioning											
S7-TB-9000	WSD Inspection & Water Cert Approval	14	25-Mar-15 A	04-May-15	Calendar Day						
S7-TB-9100	FSD Inspection & Fire Cert Approval	14	25-Mar-15 A	04-May-15	Calendar Day						
Section 8A of the Works - Re-provisioning of Wan Chai Ferry Pier in Area 8											
ABWF & E&M Installation											
Roof											
Works in Area 8 - ABWF Works at Observation Deck of Ferry Pier											
S8B-FP-01100	Roof Finishes & Misc. ABWF Installation	120	28-Oct-13 A	30-Apr-15	Calendar Day						
Section 9B of the Works - CWB Tunnel Structure (CH3400 - CH3796)											
Tunnel Portion 1 (CH3500-CH3630)											
CWB Structural Works											
Bay 6 (For OHVD Base Slab & Side Wall, Combined to Bay 5)											
Wall											
S9B-T1-B6-1120	Wall (Middle Late Cast) - Rebar Fixing	4	15-May-15	19-May-15	HK Working						
S9B-T1-B6-1130A	Wall (Middle Late Cast) - Formwork	3	20-May-15	22-May-15	HK Working						
S9B-T1-B6-1130B	Wall (Middle Late Cast) - Concrete	1	23-May-15	23-May-15	HK Working						
S9B-T1-B6-1140	Wall (Middle Late Cast) - Curing & Formwork Removal	3	24-May-15	26-May-15	Calendar Day						
Tunnel Portion 2 (CH3425-CH3500)											
CWB Structural Works											
S9B-T2-5030	Bulk Head Demolition between TP1 & TP2 @ CH3500 (By Wirecut & Sawcut & Robot)	21	13-Apr-15 A	14-May-15	HK Working						
S9B-T2-5040	Dismantle the working platform	2	15-May-15	16-May-15	HK Working						
S9B-T2-5050	Strut S4 (Gridline 9B to Gridline 10) Removal	2	18-May-15	19-May-15	HK Working						
Bay 1											
S9B-T2-B1-3110	Wall (South) - Formwork & Concrete	3	20-Apr-15 A	22-Apr-15	HK Working						
S9B-T2-B1-3120	Wall (North) - Formwork & Concrete	3	20-Apr-15 A	22-Apr-15	HK Working						
S9B-T2-B1-3140	Wall (South) - Curing & Formwork Removal	3	23-Apr-15	25-Apr-15	Calendar Day						
S9B-T2-B1-3150	Wall (North) - Curing & Formwork Removal	3	23-Apr-15	25-Apr-15	Calendar Day						
S9B-T2-B1-3160	OHVD Base Slab - Scaffolding Erection	9	18-Apr-15 A	28-Apr-15	HK Working						
S9B-T2-B1-3170	OHVD Base Slab - Waterproofing to Upper Side Wall	4	29-Apr-15	04-May-15	HK Working						
S9B-T2-B1-3180	OHVD Base Slab - Formwork	10	05-May-15	15-May-15	HK Working						
S9B-T2-B1-3190	OHVD Base Slab - Rebar Fixing	4	16-May-15	20-May-15	HK Working						
S9B-T2-B1-3200	OHVD Base Slab - Concrete, Curing & Formwork Dismantling	14	21-May-15	03-Jun-15	Calendar Day						
S9B-T2-B1-3210	OHVD Hanger Wall - Formwork, Rebar & Concrete	3	26-May-15	28-May-15	HK Working						

<p>俊和 - 中國中鐵聯營 CHUN WO - CRGL JOINT VENTURE</p>	<ul style="list-style-type: none"> █ Remaining Work █ Actual Work █ Summary Bar █ Critical Remaining Work ◆ Milestone 	<p>CEDD CONTRACT NO. HK/2009/02 Wan Chai Development Phase II - Central-Wan Chai Bypass at Wan Chai East (Contract 2) 3-MONTH ROLLING PROGRAMME (dd 20-Apr-15)</p>	<table border="1"> <tr> <th>Date</th> <th>Revision</th> <th>Checked</th> <th>Approved</th> </tr> <tr> <td>20-Apr-15</td> <td>3MRP</td> <td></td> <td></td> </tr> <tr> <td>20-Sep-14</td> <td>Revised WP</td> <td></td> <td></td> </tr> </table>	Date	Revision	Checked	Approved	20-Apr-15	3MRP			20-Sep-14	Revised WP			<p>Page 1 of 3 TASK filter: 3-Month Rolling. Print on: 23-Apr-15 09:36</p>
			Date	Revision	Checked	Approved										
20-Apr-15	3MRP															
20-Sep-14	Revised WP															

Activity ID	Activity Name	OD	Start	Finish	Calendar	2015				
						Apr 64	May 65	Jun 66	Jul 67	Aug 68
S9B-T2-B1-3220	Roof - Scaffolding Erection for Roof	7	04-Jun-15	11-Jun-15	HK Working					
S9B-T2-B1-3230	Roof - Formwork	9	12-Jun-15	23-Jun-15	HK Working					
S9B-T2-B1-3240	Roof - Rebar Fixing	10	24-Jun-15	06-Jul-15	HK Working					
S9B-T2-B1-3250	Roof - Concrete & Curing	15	07-Jul-15	21-Jul-15	Calendar Day					
Bay 2										
S9B-T2-B2-3060	Wall (South) - Formwork & Concrete	3	27-Apr-15	29-Apr-15	HK Working					
S9B-T2-B2-3070	Wall (North) - Formwork & Concrete	3	27-Apr-15	29-Apr-15	HK Working					
S9B-T2-B2-3090	Wall (South) - Curing & Formwork Removal	3	30-Apr-15	02-May-15	Calendar Day					
S9B-T2-B2-3100	Wall (North) - Curing & Formwork Removal	3	30-Apr-15	02-May-15	Calendar Day					
S9B-T2-B2-3110	OHVD Base Slab - Scaffolding Erection	9	04-May-15	13-May-15	HK Working					
S9B-T2-B2-3120	OHVD Base Slab - Waterproofing to Upper Side Wall	4	14-May-15	18-May-15	HK Working					
S9B-T2-B2-3130	OHVD Base Slab - Formwork	10	19-May-15	30-May-15	HK Working					
S9B-T2-B2-3140	OHVD Base Slab - Rebar Fixing	4	01-Jun-15	04-Jun-15	HK Working					
S9B-T2-B2-3150	OHVD Base Slab - Concrete, Curing & Formwork Dismantling	14	05-Jun-15	18-Jun-15	Calendar Day					
S9B-T2-B2-3160	OHVD Hanger Wall - Formwork, Rebar & Concrete	3	08-Jun-15	10-Jun-15	HK Working					
S9B-T2-B2-3170	Roof - Scaffolding Erection for Roof	7	19-Jun-15	27-Jun-15	HK Working					
S9B-T2-B2-3180	Roof - Formwork	9	29-Jun-15	09-Jul-15	HK Working					
S9B-T2-B2-3190	Roof - Rebar Fixing	10	10-Jul-15	21-Jul-15	HK Working					
Bay 3										
S9B-T2-B3-3060	Wall (South) - Formwork & Concrete	3	04-May-15	06-May-15	HK Working					
S9B-T2-B3-3070	Wall (North) - Formwork & Concrete	3	04-May-15	06-May-15	HK Working					
S9B-T2-B3-3080	Wall (Middle) - Curing & Formwork Removal	3	20-Apr-15 A	22-Apr-15	Calendar Day					
S9B-T2-B3-3090	Wall (South) - Curing & Formwork Removal	3	07-May-15	09-May-15	Calendar Day					
S9B-T2-B3-3100	Wall (North) - Curing & Formwork Removal	3	07-May-15	09-May-15	Calendar Day					
S9B-T2-B3-3110	OHVD Base Slab - Scaffolding Erection	9	14-May-15	23-May-15	HK Working					
S9B-T2-B3-3120	OHVD Base Slab - Waterproofing to Upper Side Wall	4	26-May-15	29-May-15	HK Working					
S9B-T2-B3-3130	OHVD Base Slab - Formwork	10	30-May-15	10-Jun-15	HK Working					
S9B-T2-B3-3140	OHVD Base Slab - Rebar Fixing	4	11-Jun-15	15-Jun-15	HK Working					
S9B-T2-B3-3150	OHVD Base Slab - Concrete, Curing & Formwork Dismantling	14	16-Jun-15	29-Jun-15	Calendar Day					
S9B-T2-B3-3160	OHVD Hanger Wall - Formwork, Rebar & Concrete	3	19-Jun-15	23-Jun-15	HK Working					
S9B-T2-B3-3170	Roof - Scaffolding Erection for Roof	7	30-Jun-15	08-Jul-15	HK Working					
S9B-T2-B3-3180	Roof - Formwork	9	09-Jul-15	18-Jul-15	HK Working					
Bay 4										
S9B-T2-B4-3040	Wall (North) - Rebar Fixing	3	21-Apr-15	23-Apr-15	HK Working					
S9B-T2-B4-3050	Wall (Middle) - Formwork & Concrete	3	23-Apr-15	25-Apr-15	HK Working					
S9B-T2-B4-3060	Wall (South) - Formwork & Concrete	3	11-May-15	13-May-15	HK Working					
S9B-T2-B4-3070	Wall (North) - Formwork & Concrete	3	11-May-15	13-May-15	HK Working					
S9B-T2-B4-3080	Wall (Middle) - Curing & Formwork Removal	3	26-Apr-15	28-Apr-15	Calendar Day					
S9B-T2-B4-3090	Wall (South) - Curing & Formwork Removal	3	14-May-15	16-May-15	Calendar Day					
S9B-T2-B4-3100	Wall (North) - Curing & Formwork Removal	3	14-May-15	16-May-15	Calendar Day					
S9B-T2-B4-3110	OHVD Base Slab - Scaffolding Erection	9	26-May-15	04-Jun-15	HK Working					
S9B-T2-B4-3120	OHVD Base Slab - Waterproofing to Upper Side Wall	4	05-Jun-15	09-Jun-15	HK Working					
S9B-T2-B4-3130	OHVD Base Slab - Formwork	10	10-Jun-15	22-Jun-15	HK Working					
S9B-T2-B4-3140	OHVD Base Slab - Rebar Fixing	4	23-Jun-15	26-Jun-15	HK Working					
S9B-T2-B4-3150	OHVD Base Slab - Concrete, Curing & Formwork Dismantling	14	27-Jun-15	10-Jul-15	Calendar Day					
S9B-T2-B4-3160	OHVD Hanger Wall - Formwork, Rebar & Concrete	3	30-Jun-15	03-Jul-15	HK Working					
S9B-T2-B4-3170	Roof - Scaffolding Erection for Roof	7	11-Jul-15	18-Jul-15	HK Working					
Bay 5										
S9B-T2-B5-3010	Wall (Middle) - Rebar Fixing	4	21-Apr-15	24-Apr-15	HK Working					
S9B-T2-B5-3030	Wall (South) - Rebar Fixing	3	21-Apr-15	23-Apr-15	HK Working					
S9B-T2-B5-3040	Wall (North) - Rebar Fixing	3	21-Apr-15	23-Apr-15	HK Working					
S9B-T2-B5-3050	Wall (Middle) - Formwork & Concrete	3	29-Apr-15	02-May-15	HK Working					
S9B-T2-B5-3060	Wall (South) - Formwork & Concrete	3	18-May-15	20-May-15	HK Working					
S9B-T2-B5-3070	Wall (North) - Formwork & Concrete	3	18-May-15	20-May-15	HK Working					
S9B-T2-B5-3080	Wall (Middle) - Curing & Formwork Removal	3	03-May-15	05-May-15	Calendar Day					
S9B-T2-B5-3090	Wall (South) - Curing & Formwork Removal	3	21-May-15	23-May-15	Calendar Day					
S9B-T2-B5-3100	Wall (North) - Curing & Formwork Removal	3	21-May-15	23-May-15	Calendar Day					
S9B-T2-B5-3110	OHVD Base Slab - Scaffolding Erection	9	05-Jun-15	15-Jun-15	HK Working					
S9B-T2-B5-3120	OHVD Base Slab - Waterproofing to Upper Side Wall	4	16-Jun-15	19-Jun-15	HK Working					
S9B-T2-B5-3130	OHVD Base Slab - Formwork	10	22-Jun-15	03-Jul-15	HK Working					
S9B-T2-B5-3140	OHVD Base Slab - Rebar Fixing	4	04-Jul-15	08-Jul-15	HK Working					
S9B-T2-B5-3150	OHVD Base Slab - Concrete, Curing & Formwork Dismantling	14	09-Jul-15	22-Jul-15	Calendar Day					
S9B-T2-B5-3160	OHVD Hanger Wall - Formwork, Rebar & Concrete	3	13-Jul-15	15-Jul-15	HK Working					
Bay 6										
S9B-T2-B6-1010	Base Slab - Waterproofing	4	15-May-15	19-May-15	HK Working					
S9B-T2-B6-1020	Base Slab - Formwork & Rebar Fixing	14	20-May-15	05-Jun-15	HK Working					
S9B-T2-B6-1030	Base Slab - Concrete & Curing	5	06-Jun-15	10-Jun-15	Calendar Day					
S9B-T2-B6-3000	Wall (South) - Waterproofing	4	11-Jun-15	15-Jun-15	HK Working					
S9B-T2-B6-3010	Wall (Middle) - Rebar Fixing	4	11-Jun-15	15-Jun-15	HK Working					
S9B-T2-B6-3020	Wall (North) - Waterproofing	4	11-Jun-15	15-Jun-15	HK Working					

Activity ID	Activity Name	OD	Start	Finish	Calendar	2015					
						Apr 64	May 65	Jun 66	Jul 67	Aug 68	
S9B-T2-B6-3030	Wall (South) - Rebar Fixing	3	16-Jun-15	18-Jun-15	HK Working						■ Wall (South) - Rebar Fixing
S9B-T2-B6-3040	Wall (North) - Rebar Fixing	3	16-Jun-15	18-Jun-15	HK Working						■ Wall (North) - Rebar Fixing
S9B-T2-B6-3050	Wall (Middle) - Formwork & Concrete	3	16-Jun-15	18-Jun-15	HK Working						■ Wall (Middle) - Formwork & Concrete
S9B-T2-B6-3060	Wall (South) - Formwork & Concrete	3	19-Jun-15	23-Jun-15	HK Working						■ Wall (South) - Formwork & Concrete
S9B-T2-B6-3070	Wall (North) - Formwork & Concrete	3	19-Jun-15	23-Jun-15	HK Working						■ Wall (North) - Formwork & Concrete
S9B-T2-B6-3080	Wall (Middle) - Curing & Formwork Removal	3	19-Jun-15	21-Jun-15	Calendar Day						■ Wall (Middle) - Curing & Formwork Removal
S9B-T2-B6-3090	Wall (South) - Curing & Formwork Removal	3	24-Jun-15	26-Jun-15	Calendar Day						■ Wall (South) - Curing & Formwork Removal
S9B-T2-B6-3100	Wall (North) - Curing & Formwork Removal	3	24-Jun-15	26-Jun-15	Calendar Day						■ Wall (North) - Curing & Formwork Removal
S9B-T2-B6-3110	OHVD Base Slab - Scaffolding Erection	9	27-Jun-15	08-Jul-15	HK Working						■ OHVD Base Slab - Scaffolding Erection
S9B-T2-B6-3120	OHVD Base Slab - Waterproofing to Upper Side Wall	4	09-Jul-15	13-Jul-15	HK Working						■ OHVD Base Slab - Waterproofing to Upper Side
S9B-T2-B6-3130	OHVD Base Slab - Formwork	10	14-Jul-15	24-Jul-15	HK Working						■ OHVD Base Slab - Formwork
Tunnel Portion 3 & Tunnel Portion 4 (CH3630-CH3790)		269	11-Mar-15 A	19-Jan-16	HK Working						
Foundation		7	18-Apr-15 A	25-Apr-15	HK Working						
Stage 4 - Southern Wall after HHR Flyover Diversion (Stage 2) (P132-P143)		7	18-Apr-15 A	25-Apr-15	HK Working						
S9B-T34-1700	Tunnel Portion 3 & 4 Pumping test	7	18-Apr-15 A	25-Apr-15	HK Working						■ Tunnel Portion 3 & 4 Pumping test
CWB Structural Works		250	11-Mar-15 A	19-Jan-16	HK Working						
S9B-T34-2000B	Tunnel Portion 3 & 4 Excavation (200,000m3 soil @800m3/d) & ELS	250	11-Mar-15 A	19-Jan-16	HK Working						
Section 10 Works - CWB Tunnel Structure (CH3246 - CH3400)		90	07-May-15	22-Aug-15	HK Working						
Tunnel Portion 6 (CH3246-CH3280)		90	07-May-15	22-Aug-15	HK Working						
S10-T6-1020	Tunnel Portion 6 Bored Pile - 13nr. (2 sets @ 14d/pile)	90	07-May-15	22-Aug-15	HK Working						
Section 11 of the Works - Remainder of Works		194	13-Feb-15 A	30-Sep-15	Calendar Day						
Marine Works at WCR3		194	13-Feb-15 A	30-Sep-15	Calendar Day						
S11-R3-1210B	Air lifting for removal of sunken objects (VO203)	138	13-Feb-15 A	30-Jun-15	Calendar Day						■ Air lifting for removal of sunken objects (VO203)
S11-R3-1210C	Removal of sunken objects	92	01-Jul-15	30-Sep-15	Calendar Day						
Soft Landscaping & Establishment Works		2375	24-Feb-10 A	29-Aug-16	Calendar Day						
Section 8D of the Works - Establishment Works in Area 8		365	21-Apr-15	19-Apr-16	Calendar Day						
S8D-0010	Carry out establishment work on new ferry pier	365	21-Apr-15	19-Apr-16	Calendar Day						
Section 12 of the Works - Protection and Preservation of Existing Trees		2375	24-Feb-10 A	29-Aug-16	Calendar Day						
S12-0010	Protection and preservation of existing trees	2375	24-Feb-10 A	29-Aug-16	Calendar Day						
SUMMARY PROGRAMME		947	07-May-13 A	08-May-16	Calendar Day						
CWB Tunnel Construction & Remaining Works (Section 9A, 9B, 10 & 11)		480	30-Aug-14 A	08-May-16	Calendar Day						
CWB Tunnel Works in WCR2		261	19-Jan-15 A	26-Sep-15	Calendar Day						
SUM-CWB-23000	CWB Tunnel Portion 2 Construction	261	19-Jan-15 A	26-Sep-15	Calendar Day						
CWB Tunnel Works in WCR3		358	30-Aug-14 A	08-May-16	Calendar Day						
SUM-CWB-30000	Reclamation at WCR3 & Ferry Pier Demolition (Except Water Channel Maintained for HK/200	209	30-Aug-14 A	08-May-16	Calendar Day						
SUM-CWB-35000B	Foundation for Tunnel Portion 6 - Bored Pile	108	07-May-15	22-Aug-15	Calendar Day						
CWB Tunnel Works in WCR4/TWCR4		249	11-Mar-15 A	19-Jan-16	Calendar Day						
SUM-CWB-42000	Pump Test & Excavation for Tunnel Portion 3&4	249	11-Mar-15 A	19-Jan-16	Calendar Day						
Reprovisioning of Existing Facilities (Section 3, 4A, 4B, 4C, 5, 6, 7, 8A & 8B)		754	07-May-13 A	04-May-15	Calendar Day						
Reprovisioning of Box Culvert N (Section 7)		249	08-Oct-14 A	04-May-15	Calendar Day						
SUM-FAC-52000	VO116 - New Transformer Building to Ferry Pier	249	08-Oct-14 A	04-May-15	Calendar Day						■ VO116 - New Transformer Building to Ferry Pier
Reprovisioning of Wan Chai Ferry Pier & Covered Walkway (Section 8A & 8B)		150	07-May-13 A	30-Apr-15	Calendar Day						
SUM-FAC-65000	ABWF Works on Observation Deck under Section 8B	150	07-May-13 A	30-Apr-15	Calendar Day						■ ABWF Works on Observation Deck under Section 8B

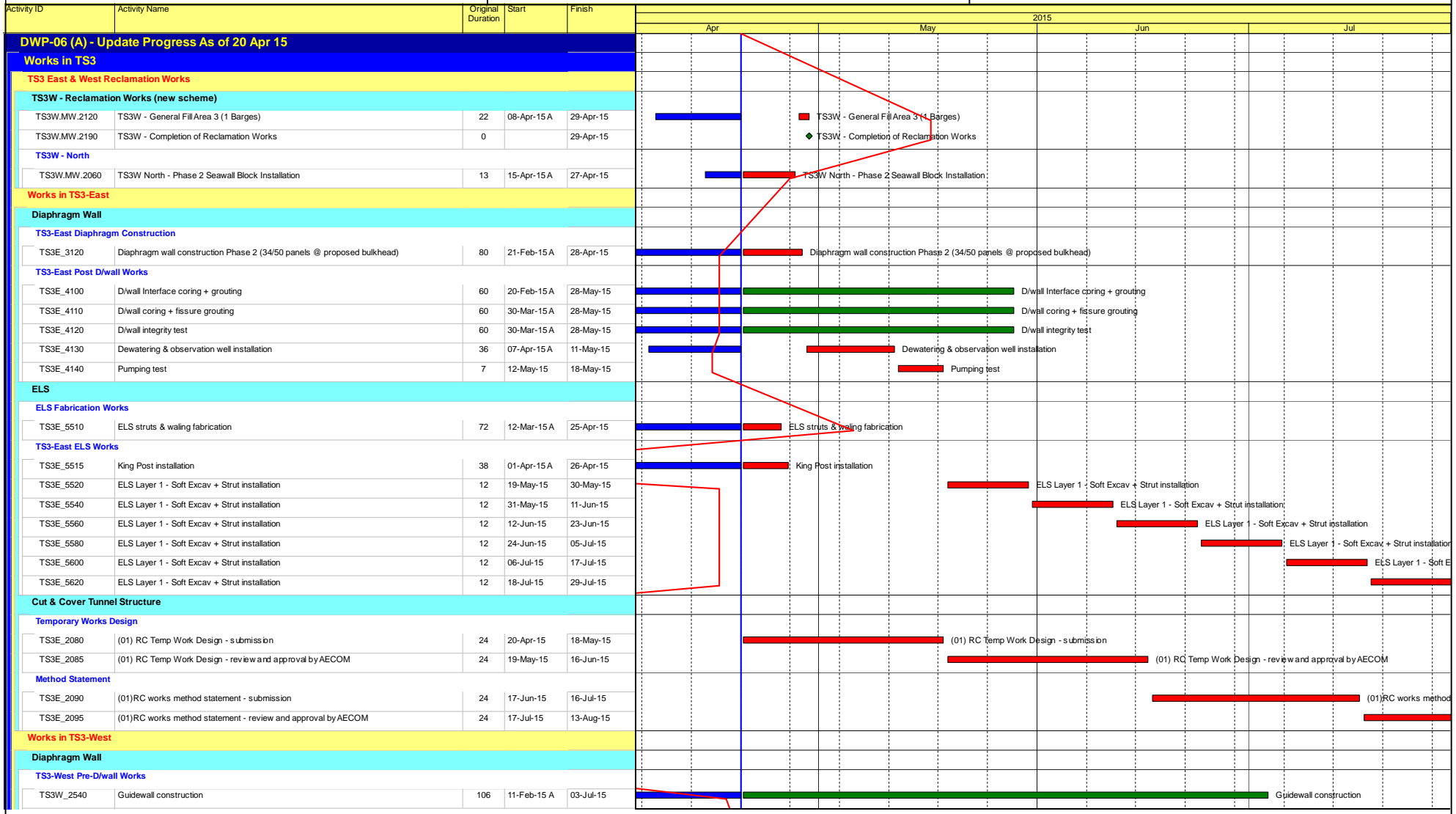


CHUN WO - CRGL JOINT VENTURE

- Remaining Work
- Actual Work
- Summary Bar
- Critical Remaining Work
- ◆ Milestone

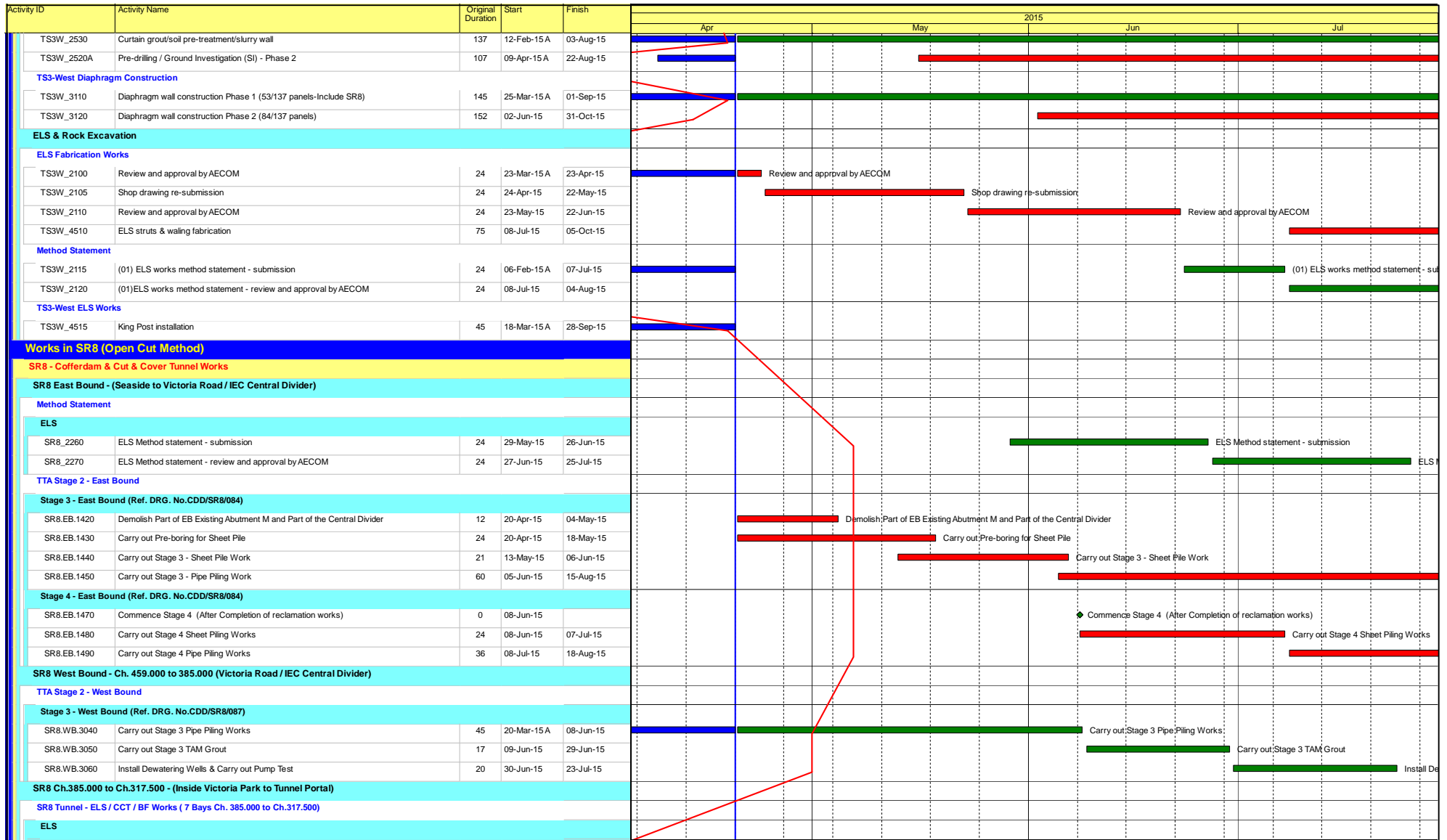
CEDD CONTRACT NO. HK/2009/02
Wan Chai Development Phase II - Central-Wan Chai Bypass at Wan Chai East (Contract 2)
3-MONTH ROLLING PROGRAMME (dd 20-Apr-15)

Date	Revision	Checked	Approved
20-Apr-15	3MRP		
20-Sep-14	Revised WP		



- Actual Work
- Remaining Work
- Critical Remainin...
- ◆ Milestone

Date	Revision	Checked	Approved
20-Apr-15	Updated to 20th Mar...	DML/...	



- Actual Work
- Remaining Work
- Critical Remainin...
- Milestone

Page 2 of 5

Contract No. HY/2010/08: Central - Wanchai Bypass Tunnel +(Slip Road 8 Section) - 3 Months Rolling Programme

Date	Revision	Checked	Approved
20-Apr-15	Updated to 20th Mar...	DML/...	

Activity ID	Activity Name	Original Duration	Start	Finish	2015				
					Apr	May	Jun	Jul	
SR8.VP.5070A	ELS Layer 3 - Soft Excavation + Strut Installation	8	11-Feb-15 A	28-Apr-15	ELS Layer 3 - Soft Excavation + Strut Installation				
SR8.VP.5080	Soft Excavation down to Formation Level	16	29-Apr-15	18-May-15	Soft Excavation down to Formation Level				
Portal Structure									
Blinding + Waterproofing									
SR8.VP.5030	Blinding for Bay 1 to Bay 7	7	18-May-15	27-May-15	Blinding for Bay 1 to Bay 7				
SR8.VP.5090	Waterproofing for Bay 1 to Bay 7	7	28-May-15	04-Jun-15	Waterproofing for Bay 1 to Bay 7				
Base Slab + Drainage									
SR8.VP.5100	Base Slab - Bay 1	8	05-Jun-15	13-Jun-15	Base Slab - Bay 1				
SR8.VP.5110	Base Slab - Bay 2	8	15-Jun-15	24-Jun-15	Base Slab - Bay 2				
SR8.VP.5120	Base Slab - Bay 3	8	25-Jun-15	04-Jul-15	Base Slab - Bay 3				
SR8.VP.5130	Base Slab - Bay 4	8	06-Jul-15	14-Jul-15	Base Slab - Bay 4				
SR8.VP.5140	Base Slab - Bay 5	8	15-Jul-15	23-Jul-15	Base Slab - Bay 5				
Pump Sump E									
SR8.VP.5360	Base Slab	8	05-Jun-15	13-Jun-15	Base Slab				
SR8.VP.5370	Wall Up to Portal Base Slab Bottom	10	15-Jun-15	26-Jun-15	Wall Up to Portal Base Slab Bottom				
SR8.VP.5380	Fill Up Void Up to Portal Base Slab Bottom	7	27-Jun-15	06-Jul-15	Fill Up Void Up to Portal Base Slab Bottom				
SR8 Ch 317.500 to Ch 210.000 - U-Structure & Slab (Victoria Park)									
Excavation and Lateral Support									
SR8_2300	Form Temporary Access to Bowling Green at Bay 3(CH230 to CH240)	7	20-Mar-15 A	28-Apr-15	Form Temporary Access to Bowling Green at Bay 3(CH230 to CH240)				
SR8_2310	ELS - Excavation to Formation Level + Lateral Support for UBA2 to UBA5	21	29-Apr-15	23-May-15	ELS - Excavation to Formation Level + Lateral Support for UBA2 to UBA5				
RC CCT & Backfill Ch317.5000 to Ch240.000									
Structure									
Blinding + Waterproofing									
SR8_1840	Remove Bulk Head at CH317.5	7	19-May-15	27-May-15	Remove Bulk Head at CH317.5				
SR8_1830	Blinding & Waterproofing Bay UBA2 to UBA5	4	26-May-15	29-May-15	Blinding & Waterproofing Bay UBA2 to UBA5				
SR8_1860	Blinding & Waterproofing Bay UBA8	4	28-May-15	01-Jun-15	Blinding & Waterproofing Bay UBA8				
Base Slab									
SR8_1801	Remove SL3 - (UBA6 - UBA7 & UBA1)	14	11-Apr-15 A	13-May-15 A	Remove SL3 - (UBA6 - UBA7 & UBA1)				
SR8_1810	SR8 U-structure Base slab (UBA2 - UBA5)	48	30-May-15	27-Jul-15	SR8 U-structure Base slab (UBA2 - UBA5)				
SR8_1812	SR8 U-structure Base slab (UBA8)	24	02-Jun-15	30-Jun-15	SR8 U-structure Base slab (UBA8)				
SR8_1813	Remove SL3 - (UBA8)	14	02-Jul-15	17-Jul-15	Remove SL3 - (UBA8)				
Wall									
SR8_1850B	SR8 U-structure Wall (UBA6-UBA7) - Stage 2	14	23-Feb-15 A	22-May-15	SR8 U-structure Wall (UBA6-UBA7) - Stage 2				
SR8_1850A	Remove SL2, 1 (UBA6-UBA7)	14	20-Apr-15	06-May-15	Remove SL2, 1 (UBA6-UBA7)				
SR8_2060	SR8 U-structure Wall (UBA8) - Stage 1	7	18-Jul-15	25-Jul-15	SR8 U-structure Wall (UBA8) - Stage 1				
Tsing Fung St - RW & Subway Extension & Toe Wall at Hing Fat St									
Ret. Wall & TF Subway Extension (Portion V)									
Retaining Wall RW8C at Tsing Fung Street (Portion V)									
VP_1770	Install Steel Railing on Top of RW8C	14	20-Apr-15	06-May-15	Install Steel Railing on Top of RW8C				
VP_1390	Demolish Top Portion of Existing Wall Head and Kerb	18	06-May-15	28-May-15	Demolish Top Portion of Existing Wall Head and Kerb				
VP_1400	Road Formation - Subbase + Kerb + U-shape Channel	48	28-May-15	25-Jul-15	Road Formation - Subbase + Kerb + U-shape Channel				
Retaining Wall + Toe Wall at Hing Fat Street									

- Actual Work
- Remaining Work
- Critical Remainin...
- ◆ Milestone

Contract No. HY/2010/08: Central - Wanchai Bypass Tunnel +(Slip Road 8 Section) - 3 Months Rolling Programme

Date	Revision	Checked	Approved
20-Apr-15	Updated to 20th Mar...	DML/...	

Activity ID	Activity Name	Original Duration	Start	Finish	2015			
					Apr	May	Jun	Jul
Subway Extension at Tsing Fung Street (Portion VIII)								
West Side								
VP_1365	Excavation and Demolition (West Part) of Subway	14	09-Apr-15 A	11-May-15	Excavation and Demolition (West Part) of Subway			
VP_1375.10	TFS Subway extension - Blinding and Waterproofing	8	12-May-15	20-May-15	TFS Subway extension - Blinding and Waterproofing			
VP_1375.20	TFS Subway extension - Base slab + Drainage	21	21-May-15	15-Jun-15	TFS Subway extension - Base slab + Drainage			
VP_1375.30	TFS Subway extension - Walls	18	16-Jun-15	08-Jul-15	TFS Subway extension - Walls			
VP_1375.40	TFS Subway extension - Roof Slab	14	09-Jul-15	24-Jul-15	TFS Subway extension - Roof Slab			
RC Works - Toe Wall (RWBE)								
VP_6152	Construct and divert Temporary Footpath	36	20-Apr-15	02-Jun-15	Construct and divert Temporary Footpath			
VP_6160	Sheet Piling and Excavation to Formation level	45	03-Jun-15	27-Jul-15	Sheet Piling and Excavation to Formation level			
Protection Works for IEC Abutment M								
TTA (Submissions, Approvals and Implementation)								
ABUTM_0910	Preparation and submission	36	06-Jul-15	15-Aug-15	Preparation and submission			
Design Submissions								
ABUTM_0945	Prepare Shop Drawings for Temporary Works	24	06-Jul-15	01-Aug-15	Prepare Shop Drawings for Temporary Works			
Works in Victoria Park								
Re-Provisioning Works								
Pavilion								
Materials Submission								
VP_6660	Issue P.O. / Manufacturing / Fabrication	48	29-Apr-15 A	26-May-15	Issue P.O. / Manufacturing / Fabrication			
Shop Drawings								
VP_0215	Shopdrawing - ER review and approval	24	13-Apr-15 A	27-Apr-15	Shopdrawing - ER review and approval			
Method Statement								
VP_6690	(01)Method statement - review and approval by AECOM	24	20-Apr-15 A	06-May-15	(01)Method statement - review and approval by AECOM			
Construction Works - BG Pavillion								
VP_1300	PV - Initial works (Site Clearance, underground utilities etc.)	24	09-Apr-15 A	22-May-15	PV - Initial works (Site Clearance, underground utilities etc.)			
VP_1340	Demolish existing BGO	24	22-Apr-15	20-May-15	Demolish existing BGO			
VP_1360	PV - foundation works	21	09-May-15	03-Jun-15	PV - foundation works			
VP_1380	PV- structural works, G/F to Roof	24	01-Jun-15	29-Jun-15	PV- structural works, G/F to Roof			
VP_1420	PV - ABWF	36	30-Jun-15	11-Aug-15	PV - ABWF			
VP_1430	PV - E&M Works	36	08-Jul-15	18-Aug-15	PV - E&M Works			
Bowling Green								
Design Submissions for Bowling Green Lighting								
VP_0330	Engineer's Review and Approval	24	23-Sep-14 A	21-Apr-15	Engineer's Review and Approval			
Method Statement								
VP_0260	(01)Method statement - review and approval by AECOM	24	20-Nov-14 A	21-Apr-15	(01)Method statement - review and approval by AECOM			
Procurement								
VP_1010.184	Issue PO / Manufacturing	10	22-Apr-15	04-May-15	Issue PO / Manufacturing			
VP_1010.194	Delivery	11	05-May-15	16-May-15	Delivery			
VP_6670	Materials Delivery - Green Turf	24	27-May-15	24-Jun-15	Materials Delivery - Green Turf			
Construction Works								
VP_1170	Demolish existing CP / BGO / Site Clearance	24	09-Apr-15 A	22-Apr-15	Demolish existing CP / BGO / Site Clearance			

- Actual Work
- Remaining Work
- Critical Remainin...
- ◆ Milestone

Contract No. HY/2010/08: Central - Wanchai Bypass Tunnel +(Slip Road 8 Section) - 3 Months Rolling Programme

Date	Revision	Checked	Approved
20-Apr-15	Updated to 20th Mar...	DML/...	

Activity ID	Activity Name	Original Duration	Start	Finish	2015																		
					Apr	May	Jun	Jul	Aug	Sep	Oct	Nov	Dec	Jan	Feb	Mar							
VP_1710	BG - Install U/G Sewerage System	24	23-Apr-15	21-May-15																			
VP_1720	BG - Install Drainage System	24	08-May-15	05-Jun-15																			
VP_1730	BG - Install Irrigation System	24	22-May-15	19-Jun-15																			
VP_1740	BG - Install Conduit and Lighting System	36	06-Jun-15	20-Jul-15																			
VP_1450	BG - Re-provisioning works - Hardscape & Furnitures (Green Turf/ Granite Tiles)	36	03-Jul-15	13-Aug-15																			
Mooring Components Upkeep (CBTS and ATS)																							
MAR_2000	Mooring Upkeep at Portion XIX(19) & XX(20) - ATS (if instructed by Engineer)	1399	21-Mar-13 A	17-Jan-17																			
MAR_1000	Mooring Upkeep at Portion III (3) - CBTS	574	15-May-14 A	09-Dec-15																			
MAR_3020	Mooring Upkeep at Portion X(10) & XVI(16) - CBTS	979	15-May-14 A	17-Jan-17																			
Works for Public Works Regional Laboratory (North Lantau)																							
Maintenance and Upkeep of New PWRL (Portion XVII)																							
PWRL_1050	Maintenance/ Upkeep of New PWRL	1301	19-Jul-13 A	21-Nov-17																			

- Actual Work
- Remaining Work
- Critical Remainin...
- Milestone

Date	Revision	Checked	Approved
20-Apr-15	Updated to 20th Mar...	DML/...	